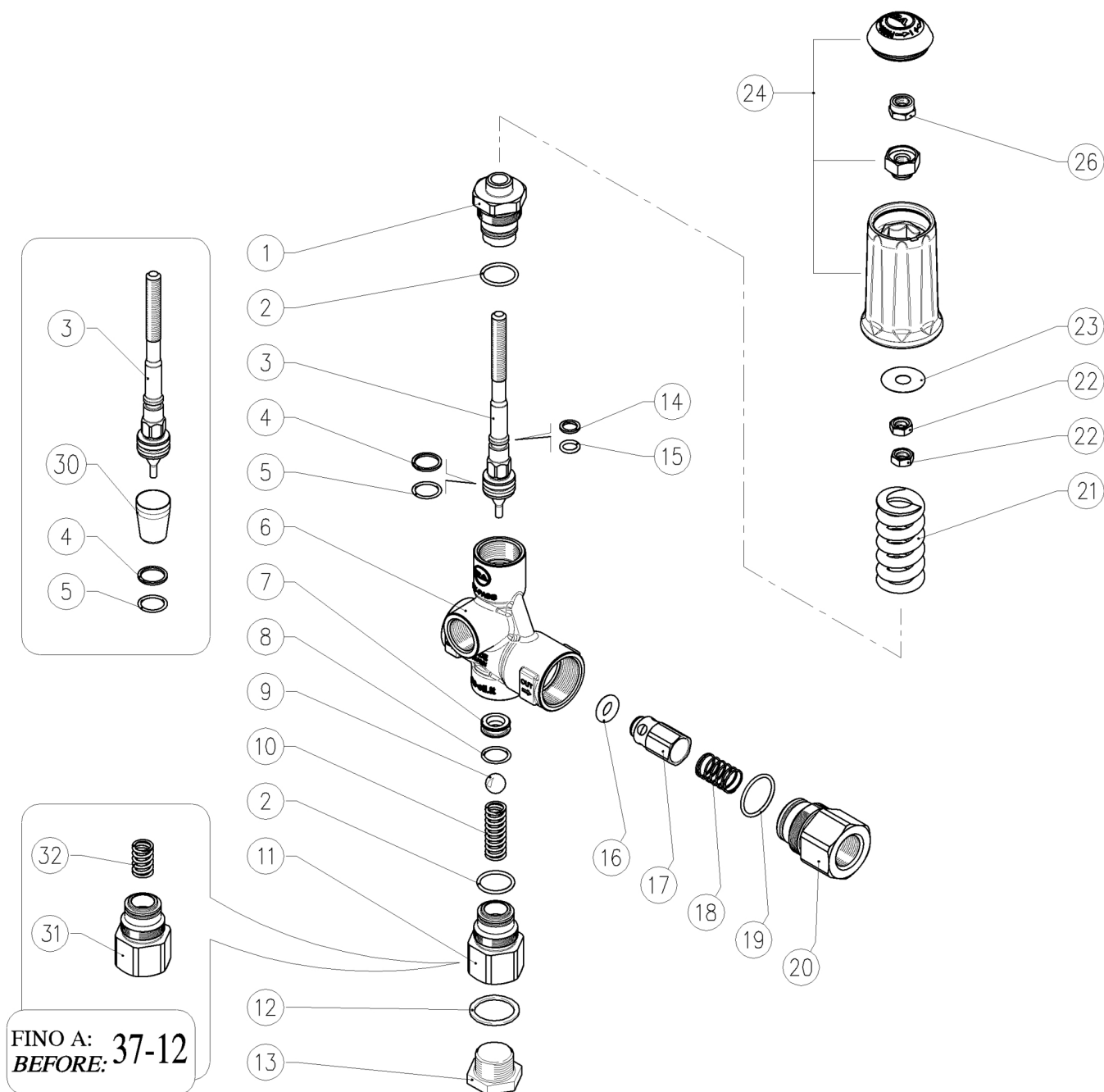


60.0490.00 VB85/150 unload. 1/2F Bsp with knob

60.0490.05 VB85/150 unload. 1/2F Npt with knob

60.0490.60 VB85/280 unload. 1/2F Bsp with knob

60.0490.65 VB85/280 unload. 1/2F Npt with knob



K1K2K3K4



1	60.0491.31	Piston holder, brass	1				3
2	10.3068.00	O-ring, 1,78x17,17 mm	2	•			10
3	60.0492.21	Valve piston, Sst.	1				5
4	10.4161.00	Back-up ring, 18 mm	1	•			3
5	10.3060.00	O-ring, 1,78x12,42 mm	1	•			10
6	60.0486.35	Housing -VB85, 1/2F Bsp brass (1,2)	1				3
6	60.0497.35	Housing -VB85, 1/2F Npt brass (3,4)	1				3
7	60.2803.51	Sst seat, 10 mm	1	•			5
8	10.3064.01	O-ring, 1,78x14 mm Ni 85	1	•			10
9	14.7465.00	Ball, 1/2" Sst.	1	•			5
10	30.5304.51	Spring, 2x29x9,9 mm Sst.	1				5
11	60.0441.31	Suction coupl., 1/2F Bsp brass (1,2)	1				3
11	60.0496.31	Suction coupl., 1/2F Npt brass (3,4)	1				3
12	14.4290.00	Washer, 22x27x1,5 mm alu. (1,2)	1				10
13	60.0413.31	Plug,brass 1/2 Bsp, hex.27 (1,2)	1				10
13	60.0444.31	Grub screw, brass 1/2 Npt (3,4)	1				10

K1K2K3K4



14	10.4008.00	Back-up ring, opn. 8x11x1,2 mm (3,4)	1	•			10
15	10.3055.00	O-ring, 1,78x7,66 mm	1	•			10
16	10.3292.00	O-ring, 4x8 mm	1	•			5
17	60.0488.99	Shutter pin, brass+or 4x8 mm	1				5
18	60.0489.51	Spring, 0,8x13,3x27 mm Sst.	1				5
19	10.3072.60	O-ring, 1,78x21,95 mm Ni 85	1	•			10
20	60.2809.31	Shutter coupl., 1/2F Bsp brass (1,2)	1				3
20	60.1852.31	Shutter coupl., 1/2F Npt brass (3,4)	1				3
21	60.0033.61	Spring, 5,7x26x53 mm blue (2,4)	1				5
21	60.0012.61	Spring, 5x25x50 mm white (1,3)	1				5
22	11.4573.31	Hex. nut, M8, brass	2				10
23	14.3720.40	Washer, 9,2x24x0,5 mm	1				10
24	60.0148.24	Knob + Plug -PulsarRv	1				5
26	11.4589.10	Hex. locknut, M8	1				10
30	10.4407.00	Seal frame >VB60-80 zero **	1				1
32	60.0410.51	Spring, 1,6x11,5x20 mm Sst.	1				5

**



K1	60.0498.24	Spares kit -VB85, 10x1pcs.	1
----	------------	----------------------------	---

(1) 60.0490.00 (2) 60.0490.60 (3) 60.0490.05 (4) 60.0490.65