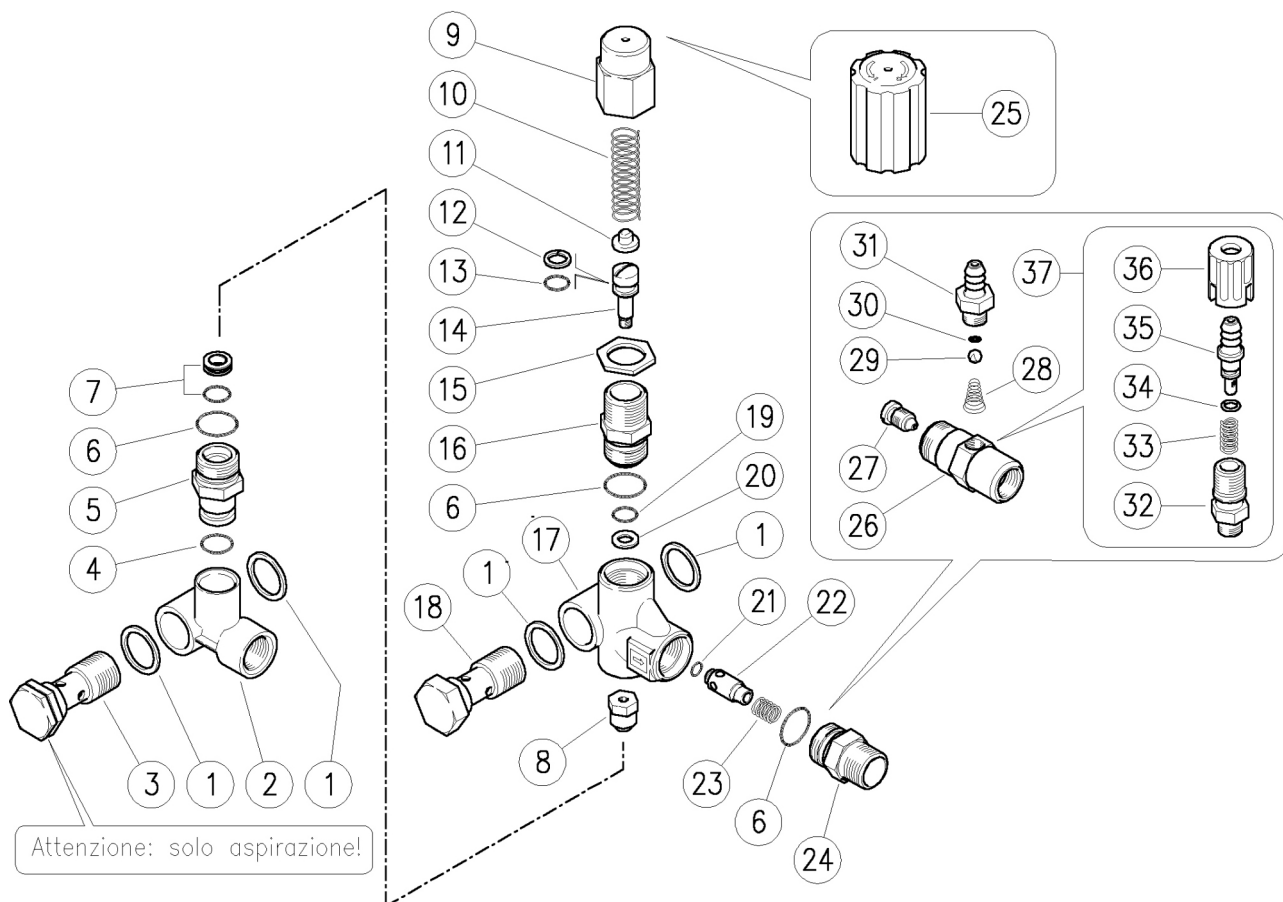


60.0800.00 VB135 unload. X:5 Y:53
60.0820.00 VB135 unload. X:0 Y:56

60.0825.00 VB135 unload.X:0-Y:63-3/8x2



K1K2K3K4					K1K2K3K4				
1	14.4100.00	Sealing washer, 3/8 Bsp	1	10	18	60.0807.31	Pierced delivery screw, 3/8M Bsp brass	1	10
1	14.4100.00	Sealing washer, 3/8 Bsp (1)	2	10	19	10.3051.01	O-ring, 1,78x6,07 mm	1	10
1	14.4101.00	Sealing washer, 1/2 Bsp (1)	2	10	20	10.4006.00	Back-up ring, 8,6x6x1,2 mm	1	10
2	60.0802.35	Valve manifold, 3/8F Bsp brass (1)	1	3	21	10.3125.00	O-ring, 2,5x4 mm	1	10
2	60.0821.35	Valve manifold, 3/8F Bsp brass	1	1	22	60.0308.99	Shutter pin, brass+or 2,5x4 mm	1	10
3	60.0803.31	Pierced suction screw, 3/8M Bsp brass	1	10	23	60.0305.31	Delivery coupl., 3/8M Bsp c/sunk, brass	1	10
3	60.0804.31	Pierced crew, 1/2M Bsp 36,5mm brass (1)	1	3	24	60.0312.51	Spring, 0,6x8,4x11 mm Sst.	1	10
4	10.3109.96	O-ring, 2,4x10,3 mm Vi 70	1	10	25	60.0315.84	Knob VB 7 / 130,plast, hexag.22	1	10
5	60.0396.31	Seat holder, 15x15 mm brass	1	5	26	21.0211.31	Inject.housing, M18x1-3/8MM Bsp brass	1	2
5	60.0382.31	Seat holder, 15x19 mm brass (2)	1	3	27	21.0231.31	Inject.housing, M18x1M-M22x1,5M brass	1	2
6	10.3066.00	O-ring, 1,78x15,6 mm	3	10	28	21.0212.51	Nozzle, M8x1 - 1,8 mm Sst.	1	10
7	60.0314.20	Seat, 7mm + O-ring, 1mm NBR85	1	10	29	21.0160.51	Tapered spring, Sst. -inject.	1	10
8	60.0333.21	Rest, M5 brass + ball, 11/32" Sst.	1	5	30	14.7420.01	Ball, 7/32" Sst. Aisi 316	1	10
9	60.0304.31	Valve regulating knob, brass	1	5	31	10.3049.00	O-ring, 1,78x5,28 mm Vi 70	1	10
10	60.0313.61	Spring, 3x12,3x41 mm	1	10	32	21.0003.31	Hose barb, 8 - M12x1 mm brass	1	10
11	60.0310.61	Spring guide, z.pl.	1	10	33	21.0173.31	Coupling, M12x1-1/4M Bsp brass	1	10
12	10.4008.00	Back-up ring, opn. 8x11x1,2 mm	1	10	34	21.0158.51	Spring, 0,8x7x15 mm Sst.	1	10
13	10.3055.00	O-ring, 1,78x7,66 mm	1	10	35	10.3043.01	O-ring, 1,78x4,48 mm Vi 70	1	10
14	60.0331.99	Piston, M5 Sst.+or+p/back	1	10	36	21.0155.99	Hose barb, d.8 mm brass+o-ring	1	3
15	60.0317.31	Locknut, M18x1 brass	1	10	37	21.0171.84	Inject.knob, 1/4F Bsp black	1	10
16	60.0303.31	Piston holder, brass	1	5		21.0100.00	Regul.+h.barb 8-M12mm brs. inje.	1	50
17	60.0801.35	Valve housing -VB135, brass	1	1					
K1					1				
60.0398.24 Spares kit -VB130, 10x1pcs.									
(1) 60.0800.00 (2) 60.0825.00									