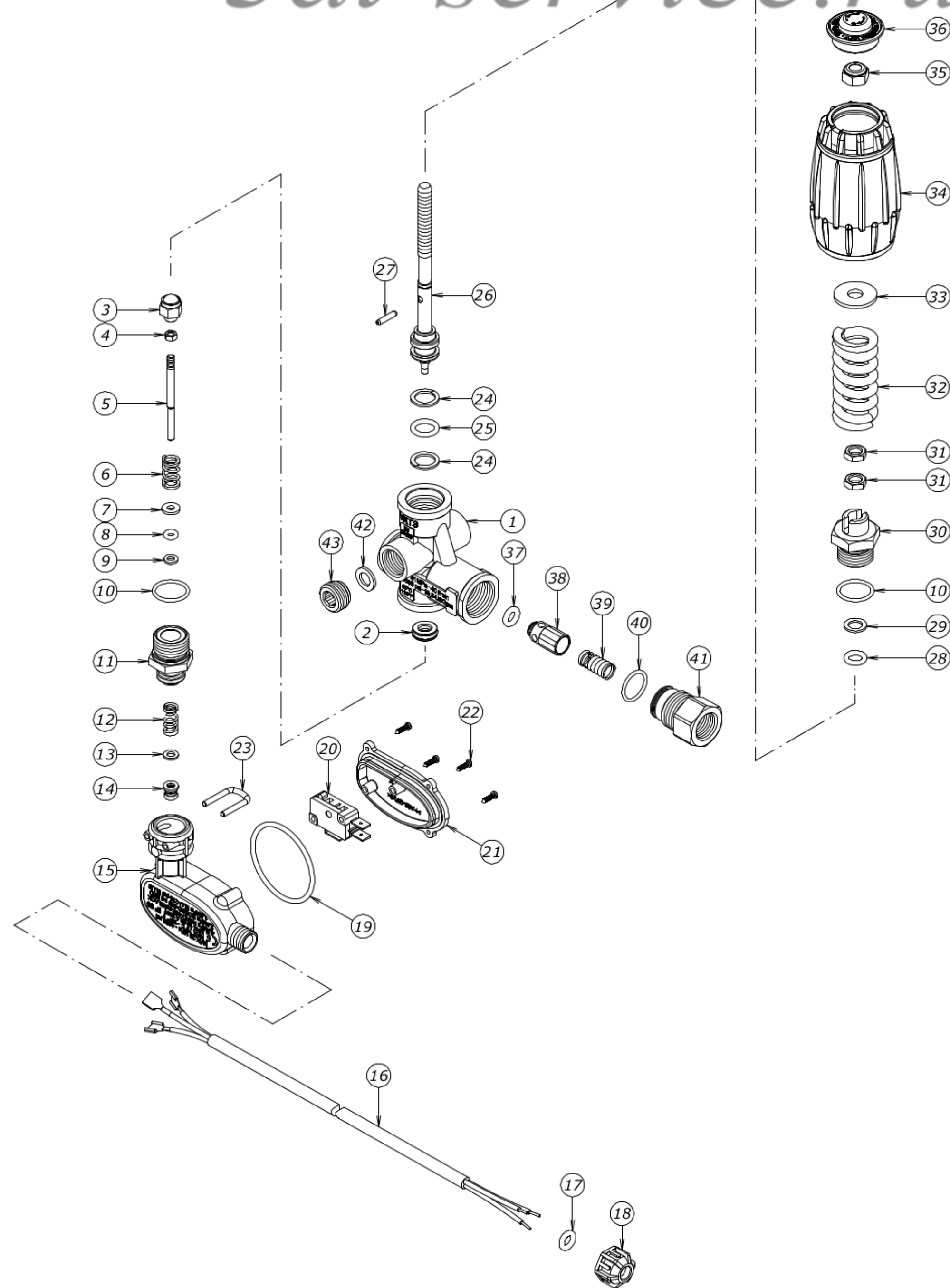


140 Bar (Yellow Spring) Valve

3al-service.ru



Num.	Codice	Descrizione Completa	Quant.	Kit 1
1	C00016036	CORPO VRT3 G 3/8 F NICHELATO	1	
2	4079500000	SEDE VRT3 Ø7 CONIATA CON OR NBR 90	1	x
3	O00000064	OTTURATORE 11/32" CB VRT3/PS6 NICH.	1	x
4	030208	DADO VRM/PRESS. M4 x 3 OTT. (A)	1	x
5	0104720260	ASTA DI COMANDO PS6 MV 0316 27	1	x
6	0107720820	MOLLA SFERA MV 0316 28	1	
7	150111	RONDELLA VR+P.D.4x10x1,5 OT. (B)	1	
8	G00001194	GUOR 2.4X3.6 VITON NERO	1	x
9	000100	A.A. 4,00x 7,90x1,20 TB (A)	1	x
10	G00001179	GUOR 2068 1.78X17.17 VITON NERO	2	x
11	R00000369	RACCORDO ATT.PRESS. PS6 NICHELATO	1	
12	400522	MOLLA PS2 15BAR	1	
13	150116	RONDELLA D. 4,5x 8,5x1,0 OT	1	
14	0122750200	GUARNIZIONE MV 0318 03	1	x
15	0101741450	SCOCCA PRESSOSTATO PS6 NERO	1	
16	0170700130	CAVO MM.1200 SEZ.3X1 NERO	1	
17	060109	GUOR 3.0X6.0 NBR 90 NERO	1	x
18	060032	GHIERA PRESS.TO-COLORE NERO	1	
19	0110750390	GUOR 2.62X44.12 3175 NBR 70 NERO	1	x
20	080303	MICROINTERRUTTORE PS6	1	
21	0128740100	COPERCHIO PS6 MV 0318 02	1	
22	0116990000	VITE TC + PZ 2,5X9,5 ZINCOCROMATE	4	
23	050204	FORCELLA PRESSOSTATI	1	
24	000125	A.A.11,50x15,9x1,20 TBT 000125B	2	x
25	060140	GUOR 2.62X10.78 3043 VITON 75 NERO	1	x
26	S02401004	STELO VX3 AISI 303	1	
27	0118720120	SPINA ELASTICA UNI ISO 28748 - 3X14	1	
28	0110750070	GUOR 2.62X7.6 3030 VITON 75 NERO	1	x
29	0122790030	A.A.8X12,6X1,2 MV 0316 05	1	x
30	R00000275	RAC.GUIDA STELO VRT3 NICHELATO	1	
31	030200	DADO VRT-VHP M 8 x 4 OTT.	2	
32	0107770060	MOLLA 5,0X20,3X56 16 MPA MV 0316 17	1	
33	150204	RONDELLA D. 8,5x24,0x2,0 Z.B.	1	
34	400305	MANOPOLA VRT2-VHP ROHS	1	
35	030101	DADO AUTOBLOC.BASSO M8x8 Z.B.	1	
36	0128740070	COPERCHIO MAN.16MPA MV 0316 20	1	
37	060132	GUOR 3.0X6.0 VITON 75 NERO	1	x
38	O00000050	OTTURATORE VX3 AISI 303	1	
39	0107720800	MOLLA OTTURATORE VRT3 MV 0316 08A	1	
40	060125	GUOR 1.78X15.6 2062 VITON 75 NERO	1	x
41	R00000276	RACCORDO RITEGNO G 3/8 F NICHELATO	1	
42	060200	GUARNIZIONE D.14 x8,3x1,5 RAME	1	
43	170101	TAPPO E.I. G3/8 CILINDRICO OTTONE	1	

Kit 1 - KIT RIC. VRT3 PS6 16/25 - NICH. 303 - Cod. 4079900055