

	EQUIPAGGIAMENTI TECNICI LAVAGGIO	UGELLO ROTANTE UR16 BASSA PRESSIONE LOW PRESSURE ROTATING NOZZLE UR16	I GB	4
			29/09/05	

PATENT PENDING

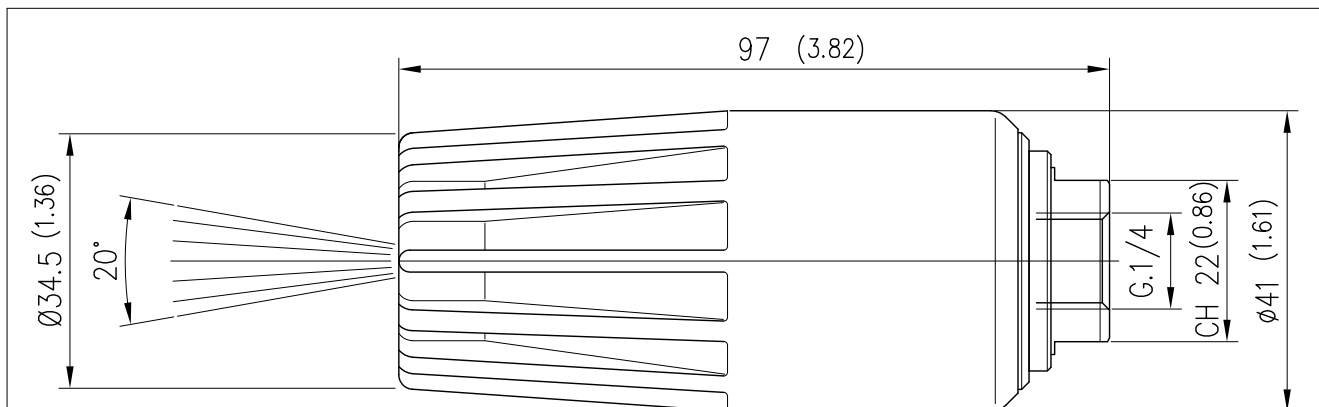


- ROBUSTA COSTRUZIONE IN OTTONE STRONG BRASS STRUCTURE - SEDE E UGELLO IN CERAMICA AD ALTISSIMA RESISTENZA HIGHLY SHOCK-RESISTANT CERAMIC SEAT AND NOZZLE - ALTO ASSORBIMENTO DEGLI URTI ACCIDENTALI GRAZIE ALLA PROTEZIONE IN PLASTICA 'GIALLA' HIGH ABSORPTION OF ACCIDENTAL KNOCKS THANKS TO THE 'YELLOW' PLASTIC PROTECTION - UTILIZZABILE IN OGNI POSIZIONE GRAZIE AL SISTEMA CON MOLLA INTERNA CHE ELIMINA I GIOCHI TRA SEDE E UGELLO. CAN BE USED IN ANY POSITION THANKS TO THE SYSTEM EQUIPPED WITH INTERNAL SPRING ELIMINATING THE CLEARANCE BETWEEN SEAT AND NOZZLE.

SPECIFICHE TECNICHE – SPECIFICATIONS

- PRESSIONE NOMINALE RATED PRESSURE	160 bar – 16 MPa (2300 psi)
- PRESSIONE MINIMA DI UTILIZZO MIN. OPERATING PRESSURE	30 bar – 3 MPa (435 psi) F.P.02 ✱ 80 bar – 8 MPa (1150 psi)
- PORTATA MINIMA MIN. FLOW	3.1 L/min (0.8 USGp.m.) 30 bar – 3 MPa (435 psi) ugello (nozzle) 025
- PORTATA MASSIMA MAX FLOW	23 L/min (6.1 USGp.m.) 160 bar – 16 MPa (2300 psi) ugello (nozzle) 08
- TEMPERATURA MINIMA MIN. WORKING TEMPERATURE	5° C (41°F)
- TEMPERATURA MASSIMA MAX WORKING TEMPERATURE	100° C (212 °F)
- PESO WEIGHT	0.41 Kg (14.46 oz)

MISURE D'INGOMBRO – OVERALL DIMENSIONS

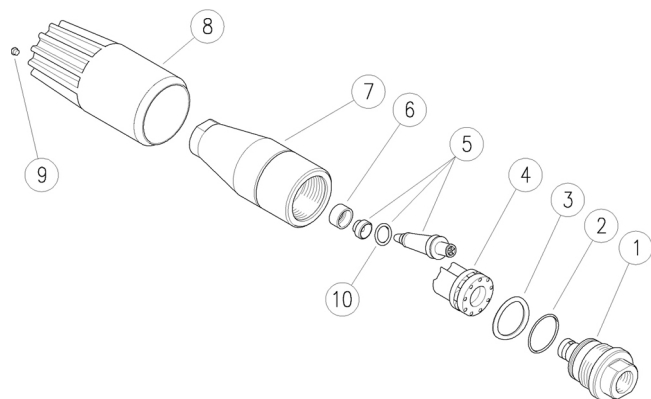


✱	CODICE CODE	FATTORE DI PORTATA CAPACITY SIZE
	25.1680.20	02
	25.1680.25	025
	25.1680.30	03
	25.1680.35	035
	25.1680.40	04
	25.1680.45	045

CODICE CODE	FATTORE DI PORTATA CAPACITY SIZE
25.1680.50	05
25.1680.55	055
25.1680.60	06
25.1680.65	065
25.1680.70	07
25.1680.80	08

25.1680.20 UR16-02 Ugello rot.160bar verde chiaro
 25.1680.25 UR16-025 Ugello rot.160bar rosa
 25.1680.30 UR16-03 Ugello rot.160bar bianco
 25.1680.35 UR16-035 Ugello rot.160bar marrone
 25.1680.40 UR16-04 Ug.rot.160bar, giallo sc.
 25.1680.45 UR16-045 Ug.rot.160bar, blu

25.1680.50 UR16-05 Ug.rot.160bar, viola ch.
 25.1680.55 UR16-055 Ug.rot.160bar, rosso sc.
 25.1680.60 UR16-06 Ug.rot.160bar, ver.sc.
 25.1680.65 UR16-065 Ug.rot.160bar, cel.
 25.1680.70 UR16-07 Ug.rot.160bar, arancio
 25.1680.80 UR16-08 Ug.rot.160bar, ex-argento

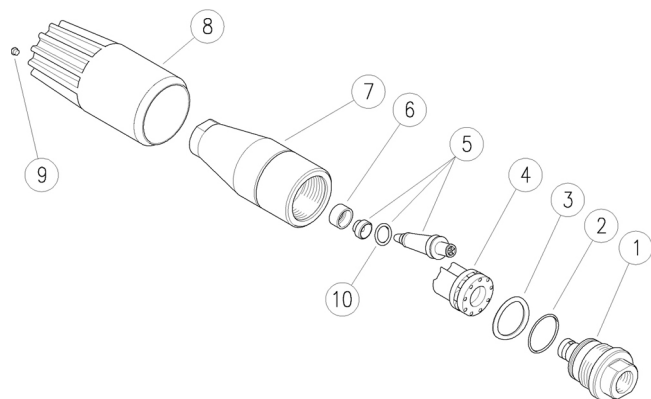


Pos.	Codice	Descrizione	Q.tà	K1	K2	K3	K4	
1	25.1679.31	Raccordo G1/4 F - 1,3 mm-fp02 (1)	1					3
1	25.1676.31	Raccordo G1/4 F - 1,0 mm (2)	1					3
1	25.1677.31	Raccordo G1/4 F - 1,1 mm (3)	1					3
1	25.1662.31	Raccordo G1/4F (4)	1					3
1	25.1663.31	Raccordo G1/4F (5)	1					3
1	25.1634.31	Raccordo G1/4F (6)	1					3
1	25.1634.31	Raccordo G1/4F (7)	1					3
1	25.1635.31	Raccordo G1/4F (8)	1					3
1	25.1635.31	Raccordo G1/4F (9)	1					3
1	25.1645.31	Raccordo G1/4F (10)	1					3
1	25.1636.31	Raccordo G1/4F (11)	1					3
1	25.1646.31	Raccordo G1/4F (12)	1					3
2	10.3072.01	An.OR 1,78x20,35 mm Ni 85	1					10
3	25.1626.63	Rosetta 14,8x23x0,1mm inox	1					5
4	25.1631.22	Turbina	1					3
5	25.1683.24	Kit ric. UR16.02 (1)	1					1
5	25.1659.24	Kit ric. UR16.025/UR25-32.03 (2)	1					1
5	25.1660.24	Kit ric. UR16.03/UR32.035 (3)	1					1
5	25.1633.24	Kit ric. UR16.035/UR25.04/UR32.04 (4)	1					1
5	25.1637.24	Kit ric. UR16.04-045/UR25-32.045 (5)	1					1
5	25.1637.24	Kit ric. UR16.04-045/UR25-32.045 (6)	1					1
5	25.1638.24	Kit ric. UR16-25-32.05 (7)	1					1
5	25.1668.24	Kit ric. UR16-25-32.055 (8)	1					1
5	25.1639.24	Kit ric. UR16-25-32.06 (9)	1					1
5	25.1640.24	Kit ric. UR16-25-32.065 (10)	1					1
5	25.1641.24	Kit ric. UR16-25-32.07 (11)	1					1
5	25.1669.24	Kit ric. UR16-25-32.08 (12)	1					1
6	25.1624.85	Guarn. 7,2x12x6 mm PTFE	1					10
7	25.1622.31	Corpo UR25	1					3
8	25.1681.85	Manopola UR16 gialla	1					3
9	15.2000.40	Chiodo 04 giallo scuro (5)	1					10
10	10.3230.00	An or 3,53 x 7,52 mm Ni 70	2					10

(1) 25.1680.20 (2) 25.1680.25 (3) 25.1680.30 (4) 25.1680.35 (5) 25.1680.40
 (6) 25.1680.45 (7) 25.1680.50 (8) 25.1680.55 (9) 25.1680.60 (10) 25.1680.65
 (11) 25.1680.70 (12) 25.1680.80

25.1680.20 UR16-02 Rotat.nzl,160bar, light green
 25.1680.25 UR16-025 Rotat.nzl,160bar, pink
 25.1680.30 UR16-03 Rotat.nzl,160bar, white
 25.1680.35 UR16-035 Rotat.nzl,160bar, brown
 25.1680.40 UR16-04 Rotat.nzl,160bar, d. yellow
 25.1680.45 UR16-045 Rotat.nzl,160bar, blue

25.1680.50 UR16-05 Rotat.nzl,160bar, l.purp.
 25.1680.55 UR16-055 Rotat.nzl,160bar, d. red
 25.1680.60 UR16-06 Rotat.nzl,160bar, d.green
 25.1680.65 UR16-065 Rotat.nzl,160bar, l.blue
 25.1680.70 UR16-07 Rotat.nzl,160bar, orange
 25.1680.80 UR16-08 Rotat.nzl,16 MPa, ex-silver



Pos.	P/N	Description	Q.ty	K1	K2	K3	K4	
1	25.1679.31	Coupling, 1/4F Bsp - 1,3 mm (1)	1					3
1	25.1676.31	Coupling, 1/4F Bsp - 1,0mm (2)	1					3
1	25.1677.31	Coupling, 1/4F Bsp - 1,1 mm (3)	1					3
1	25.1662.31	Coupling, 1/4 F Bsp (4)	1					3
1	25.1663.31	Coupling, 1/4 F Bsp (5)	1					3
1	25.1634.31	Coupling, 1/4 F Bsp (6)	1					3
1	25.1634.31	Coupling, 1/4 F Bsp (7)	1					3
1	25.1635.31	Coupling, 1/4 F Bsp (8)	1					3
1	25.1635.31	Coupling, 1/4 F Bsp (9)	1					3
1	25.1645.31	Coupling, 1/4 F Bsp (10)	1					3
1	25.1636.31	Coupling, 1/4 F Bsp (11)	1					3
1	25.1646.31	Coupling, 1/4 F Bsp (12)	1					3
2	10.3072.01	O-ring, 1,78x20,35 mm Ni 85	1					10
3	25.1626.63	Washer, 14,8x23x0,1mm Sst.	1					5
4	25.1631.22	Turbine	1					3
5	25.1683.24	Spares kit -UR16.02 (1)	1					1
5	25.1659.24	Spares kit -UR16.025/UR25-32.03 (2)	1					1
5	25.1660.24	Spares kit -UR16.03/UR32.035 (3)	1					1
5	25.1633.24	Spares kit -UR16.035/UR25.04/UR32.04 (4)	1					1
5	25.1637.24	Spares kit -UR16.04-045/UR25-32.045 (5)	1					1
5	25.1637.24	Spares kit -UR16.04-045/UR25-32.045 (6)	1					1
5	25.1638.24	Spares kit -UR16-25-32.05 (7)	1					1
5	25.1668.24	Spares kit -UR16-25-32.055 (8)	1					1
5	25.1639.24	Spares kit -UR16-25-32.06 (9)	1					1
5	25.1640.24	Spares kit -UR16-25-32.065 (10)	1					1
5	25.1641.24	Spares kit -UR16-25-32.07 (11)	1					1
5	25.1669.24	Spares kit -UR16-25-32.08 (12)	1					1
6	25.1624.85	Seal, 7,2x12x6 mm PTFE	1					10
7	25.1622.31	Housing -UR25	1					3
8	25.1681.85	Knob -UR16, yellow	1					3
9	15.2000.40	Stud, 04 dark yellow (5)	1					10
10	10.3230.00	O-Ring, 3,53x7,52 mm Ni 70	2					10

(1) 25.1680.20 (2) 25.1680.25 (3) 25.1680.30 (4) 25.1680.35 (5) 25.1680.40
 (6) 25.1680.45 (7) 25.1680.50 (8) 25.1680.55 (9) 25.1680.60 (10) 25.1680.65
 (11) 25.1680.70 (12) 25.1680.80