



SSE2025 – SSE2030 – SSE2035 – SSE2041
SSU2030 – SSU2035 – SSU2040 – SSU2050

PISTONE - PISTON Ø 20

PISTONE - PISTON Ø 22

SSE2025
SSU2030 – SSU2035

SSE2030 – SSE2035
SSU2040

PISTONE - PISTON Ø 24

SSE2041 – SSU2050

DISTINTA – SPARE PARTS

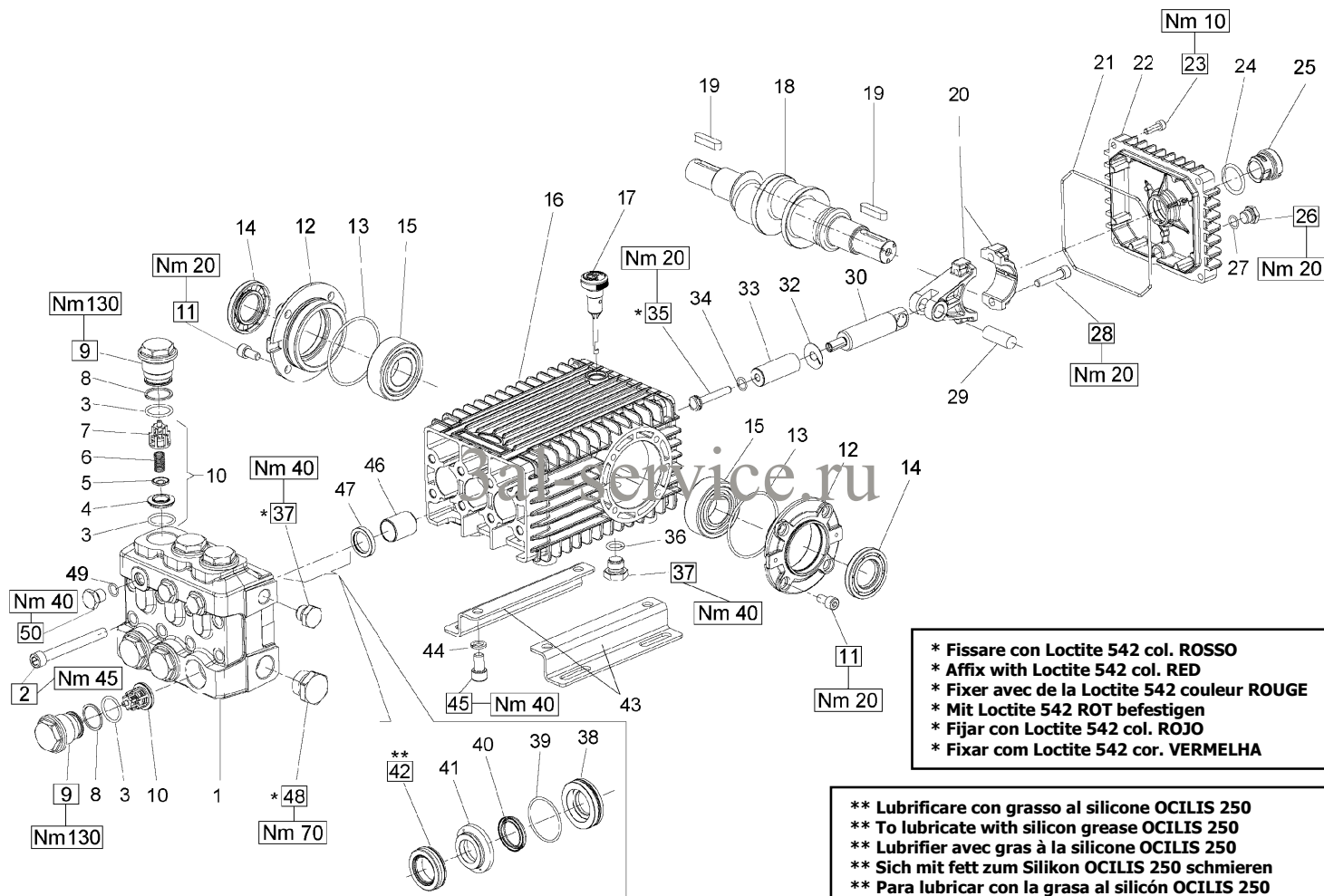
POS	COD.	DESCRIZIONE – DESCRIPTION - KIT	NR
1	66.1203.36 66.1204.36 66.1205.36	Testata Ø 20 - INOX Testata Ø 22 - INOX Testata Ø 24 - INOX	1 1 1
2	99.3802.00	Vite M10x90 UNI 5931 - INOX	8
3	90.3857.00	OR Ø 23.81x2.62 (132)	228 12
4	36.2037.66	Sede valvola sferica - INOX	228 6
5	36.2034.76	Valvola	228 6
6	94.7388.00	Molla Ø 10x18.5	228 6
7	36.2035.51	Guida valvola	228 6
8	90.5165.00	Anello antiest. Ø 24.7x29x1.5	6
9	66.1302.66	Tappo M32x1.5x29.5 - INOX	6
10	36.7131.01	Gruppo valvola aspiraz. / mand.	228 6
11	99.3038.00	Vite M8x16 UNI 5931 - INOX	8
12	47.1512.22	Coperchio cuscinetto lato spia	1
13	90.3913.00	OR Ø 67.95x2.62 (3268)	2
14	90.3877.00	OR Ø 39.34x2.62 (3156)	1
15	70.2118.01	Spia livello olio	1
16	90.0756.00	Anello di arresto Ø 45	1
17	91.8380.00	Cuscinetto a rulli NJ 2206 EC	2
18	66.0100.22	Carter pompa	1

KIT RICAMBI – SPARE KITS

KIT Nr.	KIT 2	KIT 3	KIT 228	PISTONE - PISTON Ø20		PISTONE - PISTON Ø22		PISTONE - PISTON Ø24	
				KIT 206	KIT 217	KIT 208	KIT 218	KIT 210	KIT 219
Posizioni include Positions included	51	39	3 – 4 5 – 6 7 (10)	44 – 46	42 – 43 44 – 45 46	44 – 46	42 – 43 44 – 45 46	44 – 46	42 – 43 44 – 45 46
Nr. Pcs.	3	2	6	3	1	3	1	3	1

POS	COD.	DESCRIZIONE – DESCRIPTION - KIT	NR
19	98.2106.00	Tappo carico olio G 3/8"	1
20	66.0200.35 66.0204.35	Albero – SSE1525 – SSE2030 – SSU2030 Albero – SSE2035 – SSE2014 SSU2035 – SSU2040 – SSU2050	1 1
21	91.4892.00	Linguetta 9x7x35 UNI 6604	1
22	66.0300.01	Biella completa	3
23	90.3922.00	OR Ø 133.02x2.62 (3525)	1
24	66.1600.22	Coperchio posteriore	1
25	99.1883.00	Vite M6x20 UNI 5931 - INOX	4
26	90.4011.00	OR Ø 26.58x2.53 (116)	1
27	63.2100.51	Spia livello olio	1
28	98.2040.00	Tappo G 1/4"x9 - INOX	1
29	90.3585.00	OR Ø 10.82x1.78 (2043)	1
30	99.3099.00	Vite M8x35 UNI 5931	6
32	97.7405.00	Spinotto Ø 14x39	3
33	66.0500.64	Guida pistone	3
34	96.7098.00	Rosetta Ø 10x28x0.5 - INOX	3
35	66.0400.09 66.0401.09 66.0404.09	Pistone Ø 20x54 Pistone Ø 22x54 Pistone Ø 24x54	3 3 3
36	90.3584.00	OR Ø 10.82x1.78 (2043) - 90 Sh.	3
37	66.2196.66	Vite fissaggio pistone - INOX	3
38	47.1510.22	Coperchio cuscinetto aperto	1
39	90.1648.00	Anello rad. Ø 30x55x7	3 1
40	90.3833.00	OR Ø 13.95x2.62 (3056)	1

POS	COD.	DESCRIZIONE – DESCRIPTION - KIT	NR
41	98.2100.66	Tappo G 3/8"x13	2
42	66.0817.66 66.0818.66 66.0819.66	Anello di fondo Ø 20 - INOX Anello di fondo Ø 22 - INOX Anello di fondo Ø 24 - INOX	217 3 218 3 219 3
43	90.3616.00	OR Ø34.65x1.78 (2137)	217-218-219 3
44	90.2250.00 90.2300.00 90.2350.00	Anello tenuta Ø20x26.15 LP Anello tenuta Ø22x28.15 LP Anello tenuta Ø24x30.15 LP	206-217 3 208-218 3 210-219 3
45	66.2172.66 66.2173.66 66.2174.66	Anello intermedio Ø 20 – INOX Anello intermedio Ø 22 – INOX Anello intermedio Ø 24 - INOX	217 3 218 3 219 3
46	90.2260.00 90.2312.00 90.2360.00	Anello tenuta Ø20x30x10 HP Anello tenuta Ø22x32x10 HP Anello tenuta Ø24x34x10 HP	206-217 3 208-218 3 210-219 3
47	47.2000.74	Piedino fissaggio pompa	2
48	96.7106.00	Rosetta Ø 10.2 DIN 7980	4
49	99.3644.00	Vite M10x18 UNI 5931	4
50	90.9126.00	Boccola Ø 22x25x30	3
51	90.1625.00	Anello rad. Ø 22x32x5.5	2 3
52	98.2266.00	Tappo G 3/4"x16 - INOX	1
53	90.3585.00	OR Ø 10.82x1.78 (2043)	3
54	98.2046.00	Tappo G 1/4"x13 - INOX	3





SSE2025 – SSE2030 - SSU2030

PISTONE - PISTON Ø 20

PISTONE - PISTON Ø 22

SSE2025 – SSU2030

SSE2030

DISTINTA – SPARE PARTS

POS	COD.	DESCRIZIONE – DESCRIPTION - KIT	NR
1	66.1203.36 66.1204.36	Testata Ø 20 - INOX Testata Ø 22 - INOX	1 1
2	99.3802.00	Vite M10x90 UNI 5931 - INOX	8
3	90.3857.00	OR Ø 23.81x2.62 (132)	228 12
4	36.2037.66	Sede valvola sferica - INOX	228 6
5	36.2034.76	Valvola	228 6
6	94.7388.00	Molla Ø 10x18.5	228 6
7	36.2035.51	Guida valvola	228 6
8	90.5165.00	Anello antiest. Ø 24.7x29x1.5	6
9	66.1302.66	Tappo M32x1.5x29.5 - INOX	6
10	36.7131.01	Gruppo valvola aspiraz. / mand.	228 6
11	99.3038.00	Vite M8x16 UNI 5931 - INOX	8
12	47.1510.22	Coperchio cuscinetto aperto	2
13	90.3913.00	OR Ø 67.95x2.62 (3268)	2
14	90.1648.00	Anello rad. Ø 30x55x7	3 2
15	91.8380.00	Cuscinetto a rulli NJ 2206 EC	2
16	66.0100.22	Carter pompa	1
17	98.2106.00	Tappo carico olio G 3/8"	1
18	66.0210.35	Albero D.PTO	1
19	91.4892.00	Linguetta 9x7x35 UNI 6604	2

KIT RICAMBI – SPARE KITS

PISTONE - PISTON
Ø20

PISTONE - PISTON
Ø22

KIT Nr.	KIT 2	KIT 3	KIT 228	KIT 206	KIT 217	KIT 208	KIT 218
Posizioni include Positions included	47	14	3 – 4 5 – 6 7 (10)	40 – 42	38 – 39 40 – 41 42	40 – 42	38 – 39 40 – 41 42
Nr. Pcs.	3	2	6	3	1	3	1

POS	COD.	DESCRIZIONE – DESCRIPTION - KIT	NR
20	66.0300.01	Biella completa	3
21	90.3922.00	OR Ø 133.02x2.62 (3525)	1
22	66.1600.22	Coperchio posteriore	1
23	99.1883.00	Vite M6x20 UNI 5931 - INOX	4
24	90.4051.00	OR Ø 26.58x3.53 (4106)	1
25	63.2100.51	Spia livello olio	1
26	98.2040.00	Tappo G 1/4"x9 - INOX	1
27	90.3535.00	OR Ø 10.82x1.78 (2043)	1
28	99.3039.00	Vite M8x15 UNI 5931	6
29	97.7405.00	Spinotto Ø 14x39	3
30	66.0500.64	Guida pistone	3
32	96.7098.00	Rosetta Ø 10x28x0.5 - INOX	3
33	66.0400.09 66.0401.09	Pistone Ø 20x54 Pistone Ø 22x54	3 3
34	90.3584.00	OR Ø 10.82x1.78 (2043) - 90 Sh.	3
35	66.2196.66	Vite fissaggio pistone - INOX	3
36	90.3833.00	OR Ø 13.95x2.62 (3056)	1
37	98.2100.66	Tappo G 3/8"x13	2
38	66.0817.66 66.0818.66	Anello di fondo Ø 20 - INOX Anello di fondo Ø 22 - INOX	217 3 218 3
39	90.3616.00	OR Ø34.65x1.78 (2137)	217-218-219 3
40	90.2250.00 90.2300.00	Anello tenuta Ø20x26.15 LP Anello tenuta Ø22x28.15 LP	206-217 3 208-218 3
41	66.2172.66 66.2173.66	Anello intermedio Ø 20 – INOX Anello intermedio Ø 22 – INOX	217 3 218 3

POS	COD.	DESCRIZIONE – DESCRIPTION - KIT	NR
42	90.2260.00 90.2312.00	Anello tenuta Ø20x30x10 HP Anello tenuta Ø22x32x10 HP	206-217 3 208-218 3
43	47.2000.74	Piedino fissaggio pompa	2
44	96.7106.00	Rosetta Ø 10.2 DIN 7980	4
45	99.3644.00	Vite M10x18 UNI 5931	4
46	90.9126.00	Bocca Ø 22x25x30	3
47	90.1625.00	Anello rad. Ø 22x32x5.5	2 3
48	98.2266.00	Tappo G 3/4"x16 - INOX	1
49	90.3585.00	OR Ø 10.82x1.78 (2043)	3
50	98.2046.00	Tappo G 1/4"x13 - INOX	3