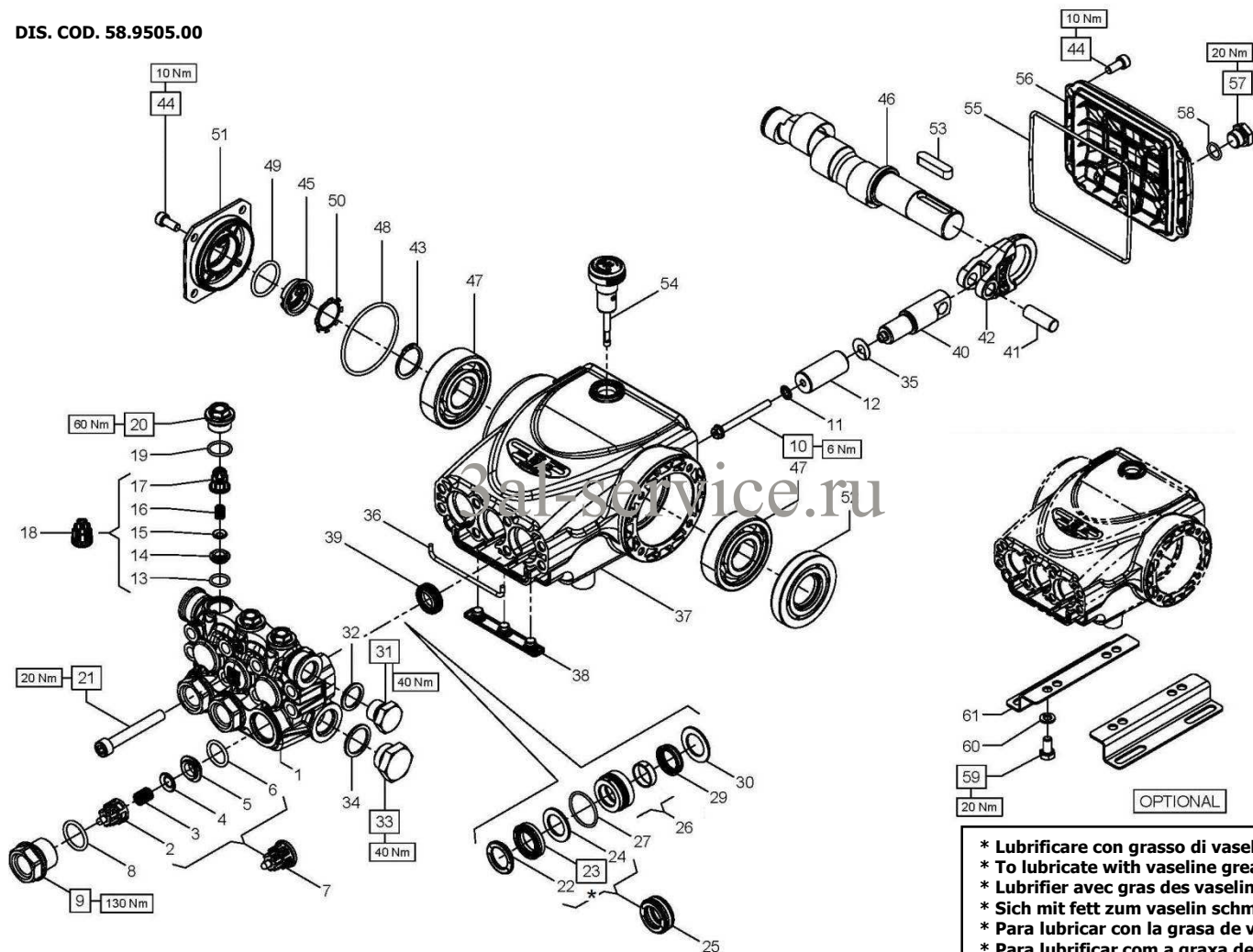


DIS. COD. 58.9505.00



- * Lubrificare con grasso di vaselina
- * To lubricate with vaseline grease
- * Lubrifier avec gras des vaseline
- * Sich mit fett zum vaselin schmieren
- * Para lubricar con la grasa de vaselina
- * Para lubrificar com a graxa de vaselina



C2W2011 – C2W2012 C2W2013

KIT RICAMBI – SPARE KITS

KIT NR.	KIT 269	KIT 292	KIT 271	KIT 342	KIT 343
Posizioni includi Positions included	2 – 3 – 4 5 – 6 – 13 14 – 15 – 16 17 - (7) – (18)	8 – 9 19 - 20	39	22 – 23 24 – 27 29	22 – 23 24 – 26 27 – 29 30
Nr. Pcs.	3 + 3	3 + 3	3	3	1

POS	COD.	DESCRIZIONE – DESCRIPTION - KIT	NR
1	58.1208.36	Testata pistone D.18	1
2	36.2025.51	Guida valvola d'aspirazione 269	3
3	94.7376.00	Molla Dm. 9.4x14.8 269	3
4	36.2001.76	Valvola sferica 269	3
5	36.2003.66	Sede valvola d'aspirazione 269	3
6	90.3841.00	OR D. 17.13x2.62 NBR 70SH 306 269	3
7	36.7115.01	Gruppo valvola d'aspirazione 269	3
8	90.3847.00	OR D. 20.24x2.62 NBR 90SH 3081 292	3
9	98.2225.00	Tappo M24x1.5x16.7 – NK 292	3
10	99.1690.00	Vite M5x55	3
11	96.6905.00	Rosetta D. 5x11.5x0.4	3
12	58.0402.09	Pistone D. 18x42	3
13	90.3674.00	OR D. 12.00x2.00 NBR 70SH 269	3
14	36.2113.66	Sede valvola di mandata 269	3
15	36.2112.76	Valvola sferica 269	3
16	94.7333.00	Molla Dm. 6.2x10.4 269	3
17	36.2111.51	Guida valvola di mandata 269	3
18	36.7193.01	Gruppo valvola mandata 269	3
19	90.3593.00	OR D. 15.60x1.78 NBR 70SH 2062 292	3
20	98.2137.50	Tappo M18x1.5x10 – NK 292	3
21	99.3175.00	Vite M8x60 UNI 5931	8
22	58.1000.51	Anello di testa D. 18 HP CW 342 343	3

POS	COD.	DESCRIZIONE – DESCRIPTION - KIT	NR
23	90.2653.30	An. ten. alt. D. 18x28x6/3,7 HP CW 342 343	3
24	90.5110.00	Anello antiest. D. 18x28x1,9 342 343	3
25	90.2655.30	An. ten. alt. D. 18x28x10 HP CW	3
26	58.6058.01	Gr. supp. guarn./boccola D. 18 343	3
27	90.3606.00	OR D. 26,7x1,78 NBR 70SH 2106 342 343	3
29	90.2650.30	An. ten. alt. D. 18x24x5 LP CW 342 343	3
30	58.2108.70	Anello per tenuta D. 18 343	3
31	98.2019.00	Tappo G 3/8"x1.3 - NK	1
32	96.7380.00	Rosetta D. 17.5x23x1.5	1
33	98.2179.00	Tappo G 1/2"x10 - NK	1
34	96.7514.00	Rosetta D. 21.5x27x1.5	1
35	96.6990.00	Rosetta D. 7.5x23x0.5	3
36	58.2105.82	Guarnizione spugna D. 3x94	1
37	58.0101.22	Carter pompa - NK	1
38	58.2104.51	Protezione	1
39	90.1565.50	Anello rad. D. 15x24x5/7 271	3
40	58.0500.66	Guida pistone	3
41	97.7340.00	Spinotto D. 10x29.5	3
42	58.0300.22	Biella	3
43	90.0635.00	Anello d'arresto D. 25	1
44	99.1837.00	Vite M6x14 UNI 5931	8
45	53.2108.51	Vetrino spia livello olio	1

POS	COD.	DESCRIZIONE – DESCRIPTION - KIT	NR
46	63.0212.35 63.0291.35 63.0216.35	Albero C.10 – C2W2011 Albero C.11 – C2W2012 Albero C.12 – C2W2013	1
47	91.8331.00	Cuscinetto a sfere	2
48	90.3898.00	OR D. 56.82x2.62 NBR 70SH 3225	1
49	90.3859.00	OR D. 25,07x2,62 NBR 70SH 3100	1
50	90.0671.00	Anello d'arresto ZJ30	1
51	53.1501.22	Coperchio laterale carter - NK	1
52	90.1641.00	Anello rad. D.25x62x10	1
53	91.4892.00	Linguetta 8x7x35	1
54	98.2105.00	Asta livello olio G 3/8"x51 D. 7	1
55	90.3925.50	OR D. 113.97x2.62 NBR 70SH 3450	1
56	58.1601.22	Coperchio posteriore - NK	1
57	98.2042.50	Tappo G 1/4"x9 TE17 – Zinc.	1
58	90.3585.00	OR D. 10.82x1.78 NBR 70SH 2043	1
59	99.3037.00	Vite M8x16 UNI 5739	4
60	96.7016.00	Rosetta D. 8.4 UNI 1751	4
61	50.2000.74	Piedino pompa	2