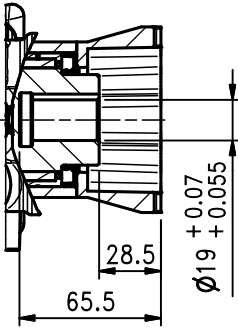
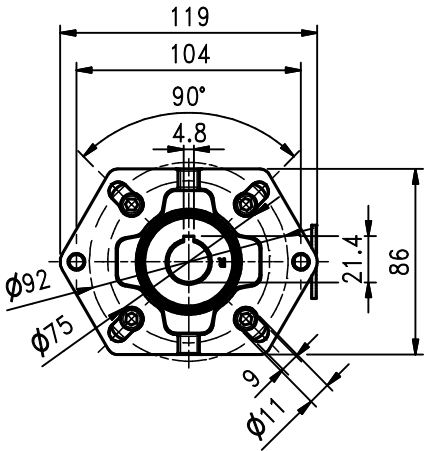
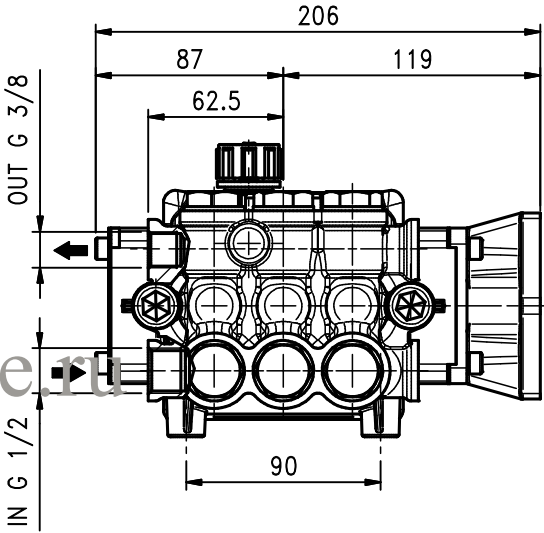
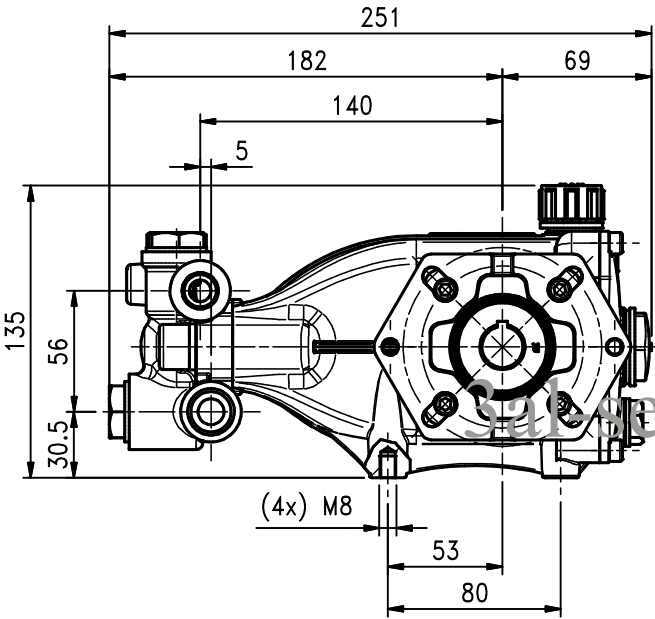


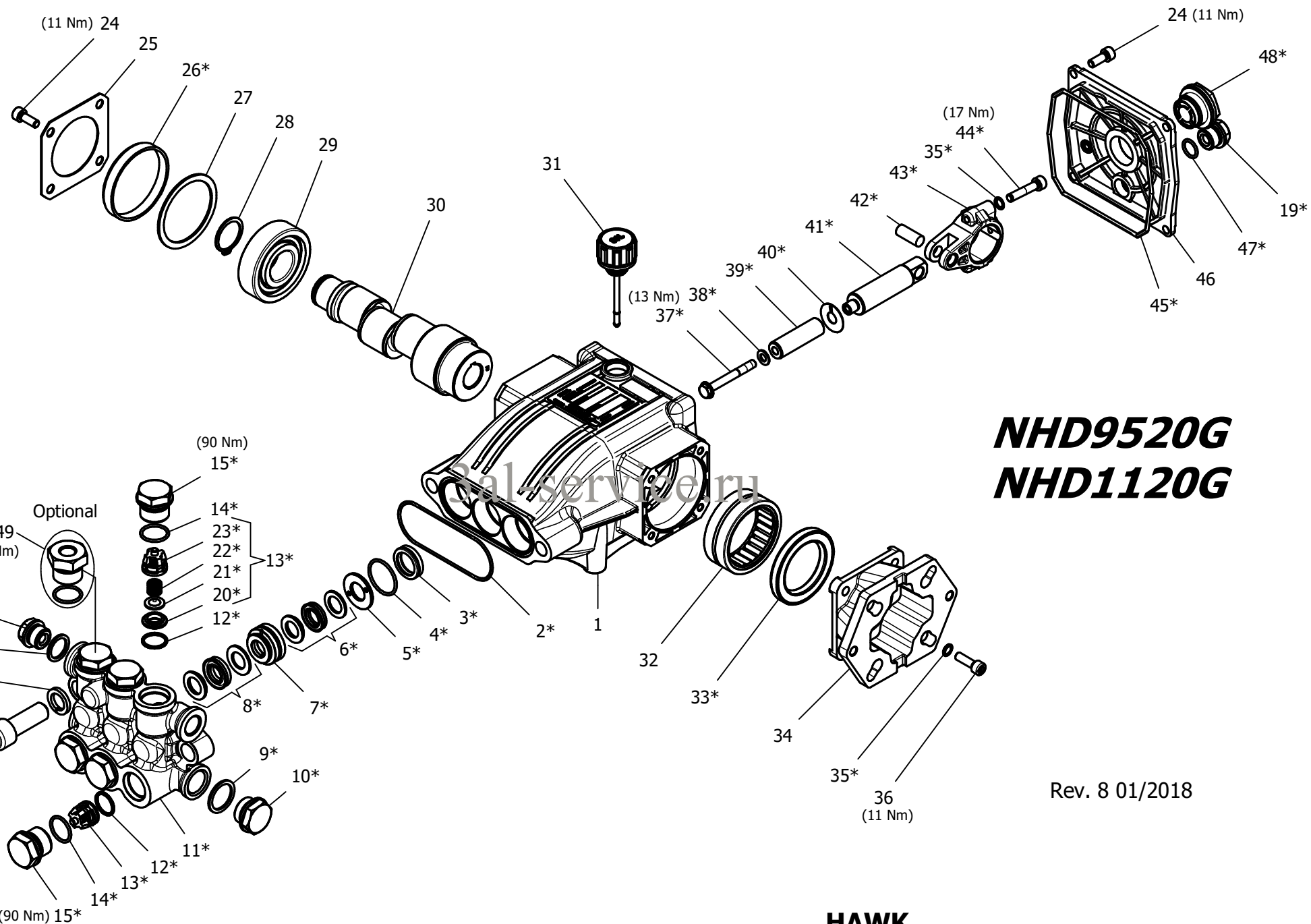
| Pump Pompa | Pressure Pressione | | Volume Portata | | RPM giri/min | Power Potenza | |
|---------------|-----------------------|------|-------------------|-----|-----------------|------------------|-----|
| | bar | PSI | l/min | GPM | | HP | kW |
| NHD9520G | 200 | 3000 | 9.5 | 2.5 | 3400 | 5.0 | 3.7 |
| NHD1120G | 200 | 3000 | 11.4 | 3.0 | 3400 | 6.0 | 4.4 |

Dimensioni d'ingombro

Overall dimensions



Rev. 8 01/2018



NHD9520G
NHD1120G

Rev. 8 01/2018

HAWK
Pompe Serie NHD 2014
NHD Pumps 2014 Series

NHD G 2014 SERIES

ORDINARY MAINTENANCE KIT / KIT MANUTENZIONE ORDINARIA

| KIT | Item Pos. | Part Number Codice | Description | Descrizione | Q.TY by Pump Q.TA per Pompa | NHD9520GR/L | NHD1120GR/L |
|-----|---------------------------------|--------------------|--------------------------|-------------------------|--------------------------------|-------------|-------------|
| A | 2- 4- 6- 8- 16 | 1.099-831.0 | PLUNGER SEALS DIA. 14 mm | GUARNIZIONI PISTONE Ø14 | 1 | • | • |
| B | 12- 13 (20 21- 22- 23) 14 | 1.905-617.0 | COMPLETE VALVE | VALVOLA COMPLETA | 1 | | |

EXTRAORDINARY MAINTENANCE KIT / KIT MANUTENZIONE STRAORDINARIA

| KIT | Item Pos. | Part Number Codice | Description | Descrizione | Q.TY by Pump Q.TA per Pompa | NHD9520GR/L | NHD1120GR/L |
|-----|---|--------------------|--------------------------------------|---|--------------------------------|-------------|-------------|
| C | 2- 4- 5- 6- 7- 8 16 | 1.905-623.0 | COMPLETE SEALS PACKING DIA. 14 mm | PACCO COMPLETO GUARNIZIONI PISTONE Ø14 | 1 | • | • |
| D | 37- 38- 39- 40 | 1.099-833.0 | PLUNGER DIA. 14 mm | PISTONE Ø14 | 1 | | |
| E | 3 | 1.099-740.0 | PLUNGER OIL SEALS | ANELLI TENUTA OLIO ASTA | 1 | | |
| F | 19- 26- 33- 45 47- 48 | 1.905-622.0 | KIT CRANKCASE SEALS | KIT TENUTE CARTER | 1 | | |
| G | 2- 4- 5- 6- 7 8- 9- 10- 11- 12 13 (20- 21- 22 23) 14- 15- 16 17- 18- 19 | 1.099-834.0 | COMPLETE MANIFOLD | TESTATA COMPLETA | 1 | | |
| H | 35- 41- 42- 43 44 | 1.904-183.0 | CONNECTING ROD PLUNGER ROD ASSY | PREMONTATO ASTA-BIELLA PISTONE | 3 | | |
| I | 14- 15 | 1.904-249.0 | VALVE PLUG ASSY | PREMONTATO TAPPO VAM | 6 | | |

“Q.TY by Pump” => Necessary quantity to repair one pump
 “Q.TA’ per Pompa” => Quantità necessaria per riparare una pompa

OPTIONAL

| Item Pos. | Part Number Codice | Description | Descrizione | Q.TY by Pump Q.TA per Pompa | NHD9520GR/L | NHD1120GR/L |
|-----------|--------------------|--------------------------|-------------------------|--------------------------------|-------------|-------------|
| 49 | 9.853-424.0 | THREADED BRASS PLUG G1/4 | PREMONTATO TAPPO FORATO | 1 | • | • |

TOOL KIT

| Part Number Codice | Description | Descrizione | Q.TY by Pump Q.TA per Pompa | NHD9520GR/L | NHD1120GR/L |
|--------------------|------------------------|------------------------|--------------------------------|-------------|-------------|
| 1.099-668.0 | TOOL-KIT | TOOL-KIT | 1 | • | • |
| 1.905-591.0 | TOOL-KIT EXTRAORDINARY | TOOL-KIT STRAORDINARIA | 1 | • | • |

3al-service.ru

IMPORTANT

IMPORTANTE

* Part available **ONLY** in kit
Disponibile **SOLO** in kit

(...) Parts pre-assembled
Parti pre-assemblate

PARTS LIST LISTA PARTI

| Item Pos | Part Number Codice | Description | Descrizione | KIT | Q.TY Q.TÀ | NHD9520GR/L | NHD1120GR/L |
|----------|--------------------|---------------------------------|-----------------------------|-------|--------------|-------------|-------------|
| 1 | 9.850-369.0 | CRANKCASE | CARTER | | 1 | | |
| 2* | | "O" RING Ø1.78X72.75 | "O" RING Ø1.78X72.75 | A-C-G | 1 | | |
| 3* | | PLUNGER OIL SEAL | ANELLO RADIALE | E | 3 | | |
| 4* | | "O" RING Ø1.78X26.7 | "O" RING Ø1.78X26.7 | A-C-G | 3 | | |
| 5* | | PRESSURE RING WASHER DIA. 14 MM | RONDELLA PRESSORE Ø14 | C-G | 3 | | |
| 6* | | "U" SEAL, DIA. 14 MM | ANELLO TENUTA "U" Ø14 | A-C-G | 3 | | |
| 7* | | PRESSURE RING DIA. 14 MM | PRESSORE "U" Ø14 | C-G | 3 | | |
| 8* | | "U" SEAL, DIA. 14 MM | ANELLO TENUTA "U" Ø14 | A-C-G | 3 | | |
| 9* | | COPPER WASHER G1/2 | GUARNIZIONE RAME G1/2 | G | 1 | | |
| 10* | | BRASS PLUG G1/2 | TAPPO OTTONE G1/2 | G | 1 | | |
| 11* | | MANIFOLD HOUSING | TESTATA | G | 1 | | |
| 12* | | "O" RING Ø1.78X15.6 | "O" RING Ø1.78X15.6 | B-G | 6 | | |
| 13* | | VALVE ASSEMBLY | VALVOLA PREMONTATA | B-G | 6 | | |
| 14* | | "O" RING Ø1.78X18.77 | "O" RING Ø1.78X18.77 | B-G-I | 6 | | |
| 15* | | VALVE PLUG | TAPPO VALVOLA | G-I | 6 | • | • |
| 16* | | MANIFOLD STUD BOLT M14X40 | VITE TCEI M14X40 | A-C-G | 2 | | |
| 17* | | LOCK-WASHER | ROSETTA ELASTICA Ø14 | G | 2 | | |
| 18* | | COPPER WASHER G3/8 | GUARNIZIONE RAME G 3/8 | G | 1 | | |
| 19* | | BRASS PLUG G 3/8 | TAPPO OTTONE G 3/8 | F-G | 2 | | |
| 20* | | VALVE SEAT | SEDE VALVOLA | B-G | 6 | | |
| 21* | | VALVE PLATE | PIATTELLO VALVOLA | B-G | 6 | | |
| 22* | | VALVE SPRING | MOLLA VALVOLA | B-G | 6 | | |
| 23* | | VALVE CAGE | GABBIA VALVOLA | B-G | 6 | | |
| 24 | 9.851-474.0 | SCREW M6X16 | VITE TCEI M6X16 | | 12 | | |
| 25 | 9.850-379.0 | BEARING COVER | COPERCHIO CUSCINETTO | | 2 | | |
| 26* | | BEARING SEAL | CAPPELLOTTO CUSCINETTO | F | 1 | | |
| 27 | 9.850-554.0 | CRANKSHAFT SEAL SPACER | DISTANZIALE PARAOLIO ALBERO | | 2 | | |
| 28 | 9.851-198.0 | SNAP RING DIA. 25 MM | ANELLO Ø25 | | 1 | | |
| 29 | 9.850-460.0 | BALL BEARING | CUSCINETTO A SFERE | | 2 | | |
| 30 | 9.850-243.0 | HOLLOW SHAFT | ALBERO CAVO | | 1 | • | |
| | 9.850-230.0 | " " | " " | | 1 | | • |
| 31 | 9.851-286.0 | OIL DIP STICK | TAPPO LIVELLO OLIO | | 1 | | |
| 32 | 9.850-354.0 | NEEDLE ROLLER BEARING | CUSCINETTO A RULLINI | | 1 | | |
| 33* | | CRANKSHAFT SEAL | ANELLO RADIALE | F | 1 | • | • |
| 34 | 9.850-634.0 | ENGINE FLANGE | FLANGIA MOTORE | | 4 | | |
| 35* | | SPRING WASHER DIA. 6 MM | ROSETTA SCHNORR Ø6 | F | 10 | | |
| 36 | 9.851-491.0 | SCREW M6X20 | VITE TCEI M6X20 | | 4 | | |

| Item Pos | Part Number Codice | Description | Descrizione | KIT | Q.TY Q.TÀ | NHD9520GR/L | NHD1120GR/L |
|----------|--------------------|-----------------------|------------------------|-----|--------------|-------------|-------------|
| 37* | | PLUNGER BOLT | VITE PISTONE | D | 3 | | |
| 38* | | COPPER SPACER | ROSETTA RAME | D | 3 | | |
| 39* | | PLUNGER DIA. 14 MM | PISTONE Ø14 | D | 3 | | |
| 40* | | COPPER SPACER | ROSETTA RAME | D | 3 | | |
| 41* | | PLUNGER ROD | ASTA PISTONE | H | 3 | | |
| 42* | | CONNECTING ROD PIN | SPINOTTO | H | 3 | | |
| 43* | | CONNECTING ROD | BIELLA | H | 3 | | |
| 44* | | CONNECTING ROD SCREW | VITE M6X30 | H | 6 | | |
| 45* | | "O" RING Ø2.62X111.62 | "O" RING Ø2.62X111.62 | F | 1 | | |
| 46 | 9.850-392.0 | CRANKCASE COVER | COPERCHIO POSTERIORE | | 1 | | |
| 47* | | "O" RING Ø1.78X14 | "O" RING Ø1.78X14 | F | 1 | | |
| 48* | | SIGHT GLASS G3/4 | SPIA LIVELLI OLIO G3/4 | F | 1 | | |

3al-service.ru