

STEAMTEC 312, 520, 51H

Model:

STEAMTEC 312

STEAMTEC 5 1H

STEAMTEC 520



Part List US-English

23-02-2015

Nilfisk

www.nilfisk.com

Table of Contents

STEAMTEC 312, 520, 51H

STEAMTEC 312	3
STEAMTEC 520 base	5
STEAMTEC 520 cover	7
STEAMTEC 51H base	9
STEAMTEC 51H cover	11
Accessories	13
Steam ironing station	15
Steam ironing cover	17
Steam ironing board version 2009 June	19

3al-service.ru

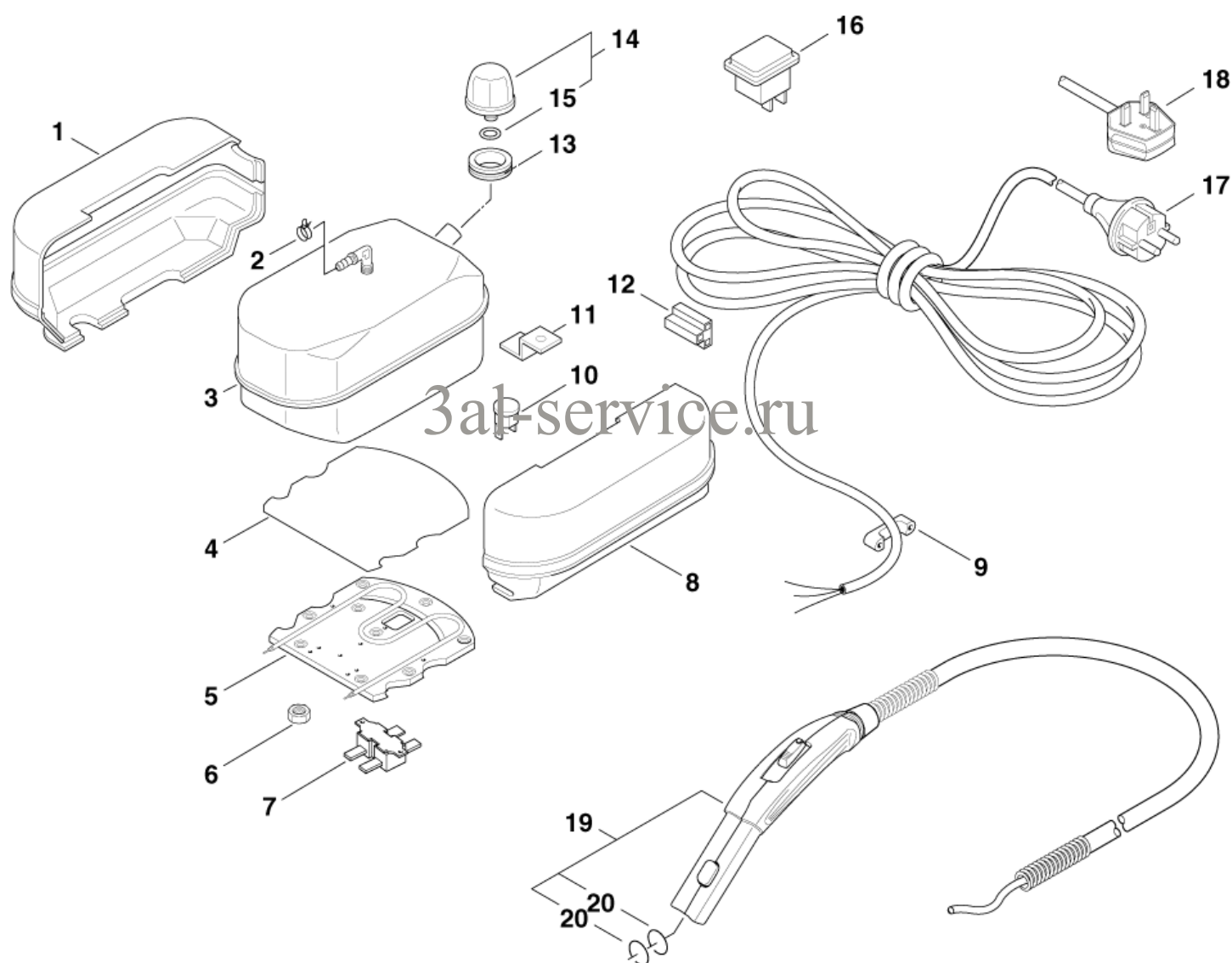
STEAMTEC 312

STEAMTEC 312, 520, 51H

23-02-2015

Part List ID
STEAMTEC02

3



STEAMTEC 312

STEAMTEC 312, 520, 51H

23-02-2015

Part List ID
STEAMTEC02

4

Pos	Part no.	Qty	Description
0	10000101	1	PACKAGING STEAMTEC 312
0	31000271	1	CARDBOARD BOX STEAMTEC 312 DK
1	303000473	1	INSULATION RIGHT
2	303000457	1	HOSE CLIP Ø 9.5-11
3	303000471	1	TANK 1.2L
4	303000461	1	GASKET 150X60X0.5
5	303000462	1	HEATER 230V 1560W
6	1804285	8	LOCK NUT M5
7	303000445	1	THERMAL CUT-OUT 180C
8	303000472	1	INSULATION LEFT
9	303000463	1	STRAP 21X8X6
10	303000460	1	THERMO SWITCH 150C
11	303000451	1	BRACKET 36X12X5
12	303000470	1	CONNECTOR HOUSING 3-POL.
13	303000447	1	GASKET Ø 34X Ø 20X12
14	303000458	1	SAFETY CAP 5.5BAR
15	3756	1	O-RING 14.0x2.5 DIN 3770 NBR70
16	303000450	1	MAIN SWITCH 16A 250V
17	303000464	1	POWER CORD H05VV-F 3X1X4 *EU*
17	303000466	1	POWER CORD H05VV-F 3X1X4 *DK*
18	303000465	1	POWER CORD H05VV-F 3X1X4 GE 230V*
19	303000437	1	STEAM HOSE
20	12960	2	O-RING 7.65X1.78 ARP AS 568 A NBR90

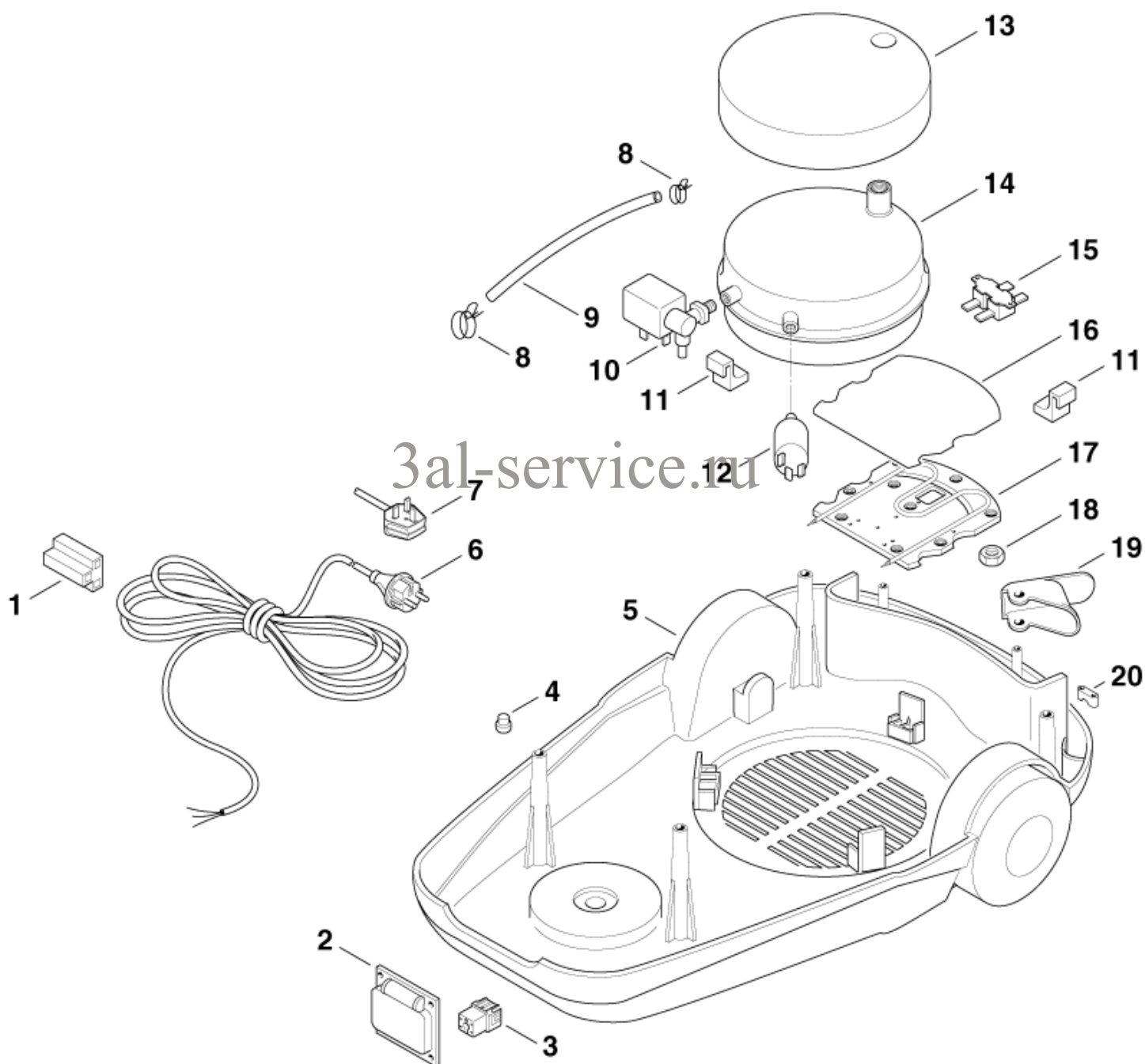
STEAMTEC 520 base

STEAMTEC 312, 520, 51H

23-02-2015

Part List ID
STEAMTEC04

5



STEAMTEC 520 base

STEAMTEC 312, 520, 51H

23-02-2015

Part List ID
STEAMTEC04

6

Pos	Part no.	Qty	Description
0	10000102	1	PACKAGING STEAMTEC 520
1	303000470	1	CONNECTOR HOUSING 3-POL.
2	303000444	1	COVER FOR SOCKET
3	303000446	1	SOCKET
4	303000448	2	DISTANCE PIECE Ø 8X4X16
5	303000478	1	BASE
6	303000464	1	POWER CORD H05VV-F 3X1X4 *EU*
6	303000466	1	POWER CORD H05VV-F 3X1X4 *DK*
7	303000465	1	POWER CORD H05VV-F 3X1X4 *GB,230V*
8	2404	2	HOSE CLAMP Ø 12X9
9	303000443	1	HOSE Ø 4.5X190
10	303000484	1	SOLENOID VALVE Ø 5-R1/8
11	303000479	3	BRACKET 22X22X20
12	303000476	1	PRESSURE SWITCH 3.8BAR
13	303000438	1	ISOLATION Ø 195X45
14	303000442	1	TANK 1.5L
15	303000487	1	THERMAL CUT-OUT 180C
16	303000441	1	GASKET 135X123X0.5
17	303000440	1	HEATER 230V 1450W
18	1804285	10	LOCK NUT M5
19	303000482	2	BRACKET 76X39X21
20	303000463	1	STRAP 21X8X6

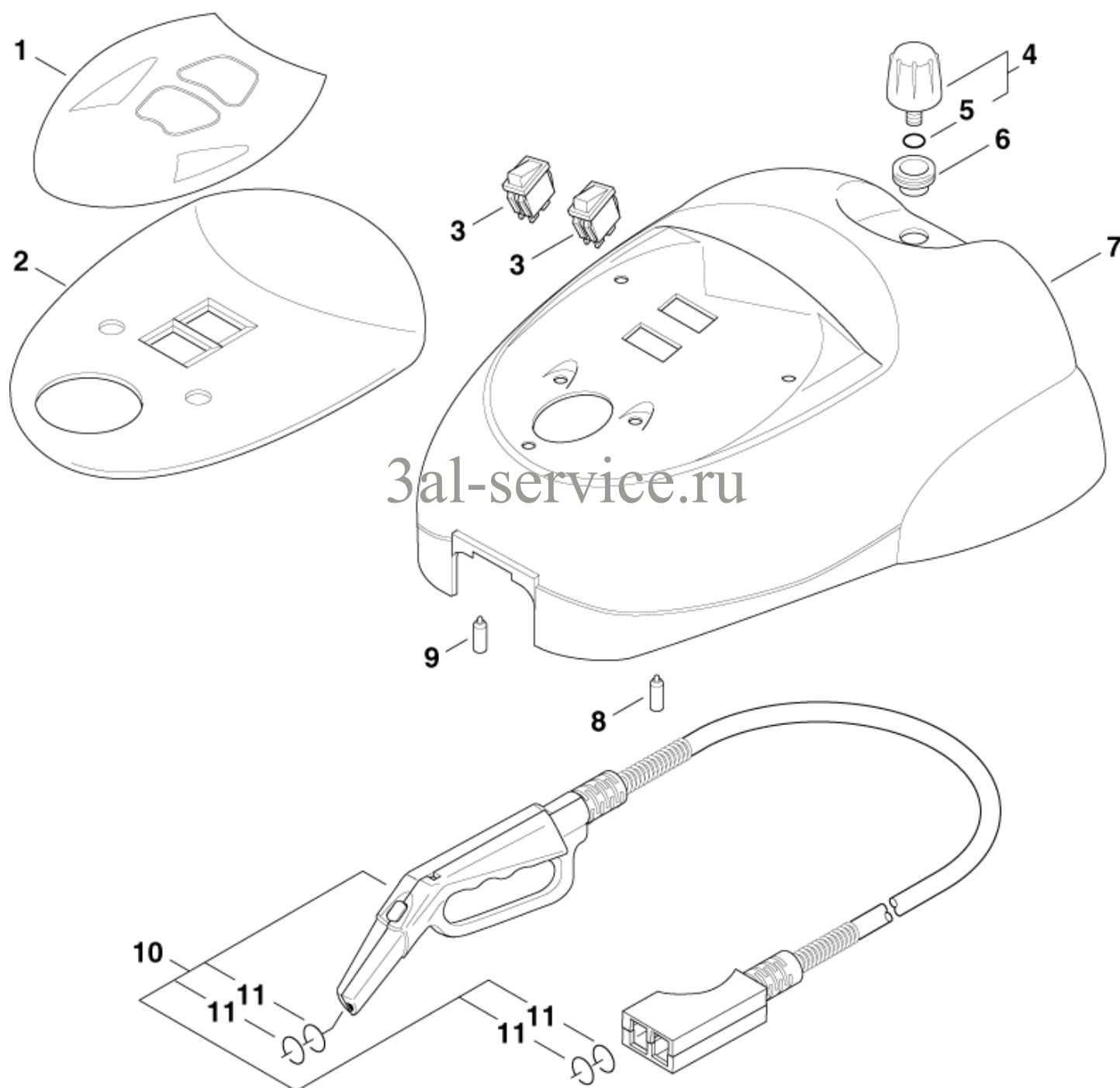
STEAMTEC 520 cover

STEAMTEC 312, 520, 51H

23-02-2015

Part List ID
STEAMTEC06

7



STEAMTEC 520 cover

STEAMTEC 312, 520, 51H

23-02-2015

Part List ID
STEAMTEC06

8

Pos	Part no.	Qty	Description
1	303000483	1	LABEL
2	303000436	1	COVER 207X158X34
3	303000477	2	MAIN SWITCH 16A 250V
4	303000458	1	SAFETY CAP 5.5BAR
5	3756	1	O-RING 14.0x2.5 DIN 3770 NBR70
6	303000447	1	GASKET Ø 34X Ø 20X12
7	303000480	1	COVER STEAMTEC 520
8	303000439	1	INDICATOR LAMP 230V -GR
9	303000469	1	INDICATOR LAMP 230V -WH
10	303000488	1	STEAM HOSE
11	12960	4	O-RING 7.65X1.78 ARP AS 568 A NBR90

3al-service.ru

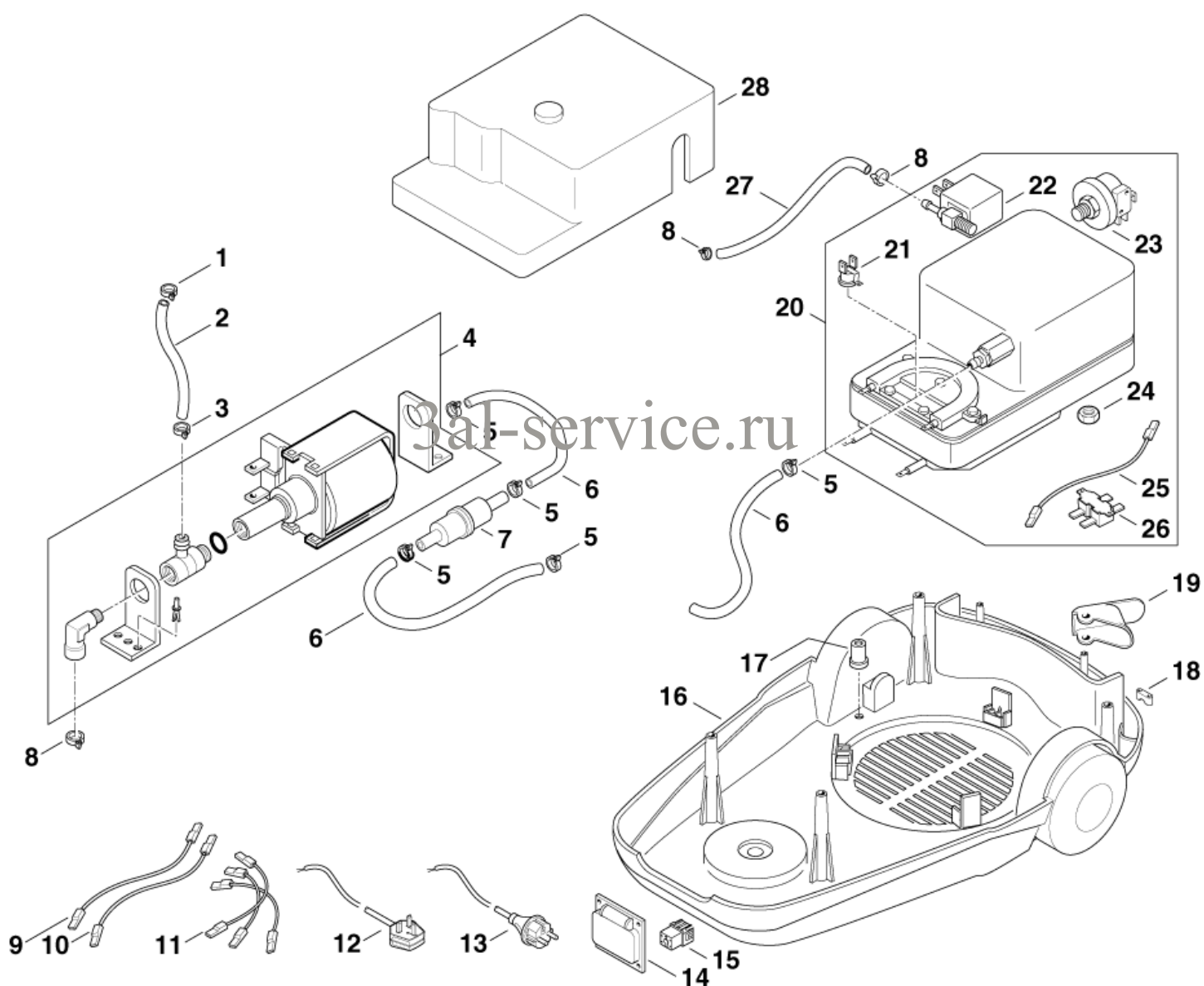
STEAMTEC 5IH base

STEAMTEC 312, 520, 51H

23-02-2015

Part List ID
STEAMTEC08

9



STEAMTEC 5IH base

STEAMTEC 312, 520, 51H

23-02-2015

Part List ID
STEAMTEC08

10

Pos	Part no.	Qty	Description
0	10000103	1	PACKAGING STEAMTEC 5 IH
0	31000272	1	CARDBOARD BOX STEAMTEC 51H GB
1	303000500	1	WIRE HOSE CLAMP Ø 9
2	303000493	1	HOSE Ø 4X2X190
3	11860	1	HOSE CLIP Ø 9-11
4	303000494	1	PUMP
5	2404	5	HOSE CLAMP Ø 12X9
6	303000490	3	HOSE Ø 5X2.5X155
7	303000481	1	FILTER
8	303000457	3	HOSE CLIP Ø 9.5-11
9	303000498	1	CABLE 1X150 - BLUE
10	303000499	1	CABLE 1X200 - BROWN
11	303000497	1	CABLE 8X1.0MM
12	303000465	1	POWER CORD H05VV-F 3X1X4 *GB,230V*
13	303000464	1	POWER CORD H05VV-F 3X1X4 *EU*
13	303000466	1	POWER CORD H05VV-F 3X1X4 *DK*
14	303000444	1	COVER FOR SOCKET
15	303000446	1	SOCKET
16	303000478	1	BASE
17	303000486	4	DISTANCE PIECE Ø 18X20
18	303000463	1	STRAP 21X8X6
19	303000482	2	BRACKET 76X39X21
20	303000495	1	TANK KIT
21	303000459	1	THERMO SWITCH 160C
22	303000484	1	SOLENOID VALVE Ø 5-R1/8
23	303000456	1	PRESSURE SWITCH 3.0BAR
24	1804285	13	LOCK NUT M5
25	303000485	1	THERMAL CUT-OUT 240C
26	303000487	1	THERMAL CUT-OUT 180C
27	303000496	1	HOSE Ø 4.5X320
28	303000501	1	ISOLATION UPPER

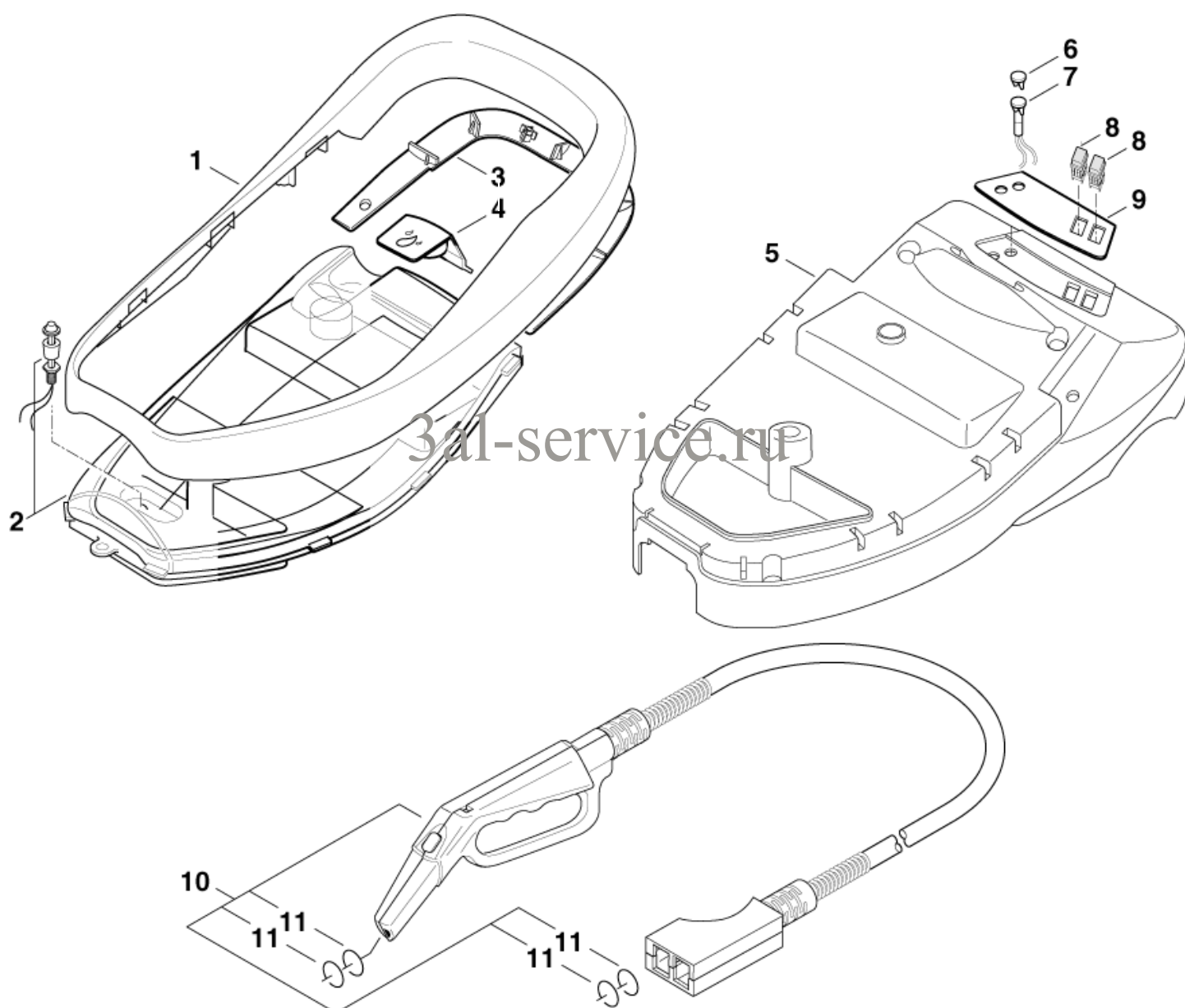
STEAMTEC 5IH cover

STEAMTEC 312, 520, 51H

23-02-2015

Part List ID
STEAMTEC10

11



STEAMTEC 5IH cover

STEAMTEC 312, 520, 51H

23-02-2015

Part List ID
STEAMTEC10

12

Pos	Part no.	Qty	Description
1	303000455	1	HANDLE
2	303000452	1	TANK 1.35L
3	303000454	1	COVER 240x175x13
4	303000453	1	COVER 65X65X26
5	303000449	1	COVER - BLUE
6	303000474	1	BRACKET
7	303000475	1	INDICATOR LAMP 110-240V
8	303000450	2	MAIN SWITCH 16A 250V
9	303000468	1	LABEL
10	303000488	1	STEAM HOSE
11	12960	4	O-RING 7.65X1.78 ARP AS 568 A NBR90

3al-service.ru

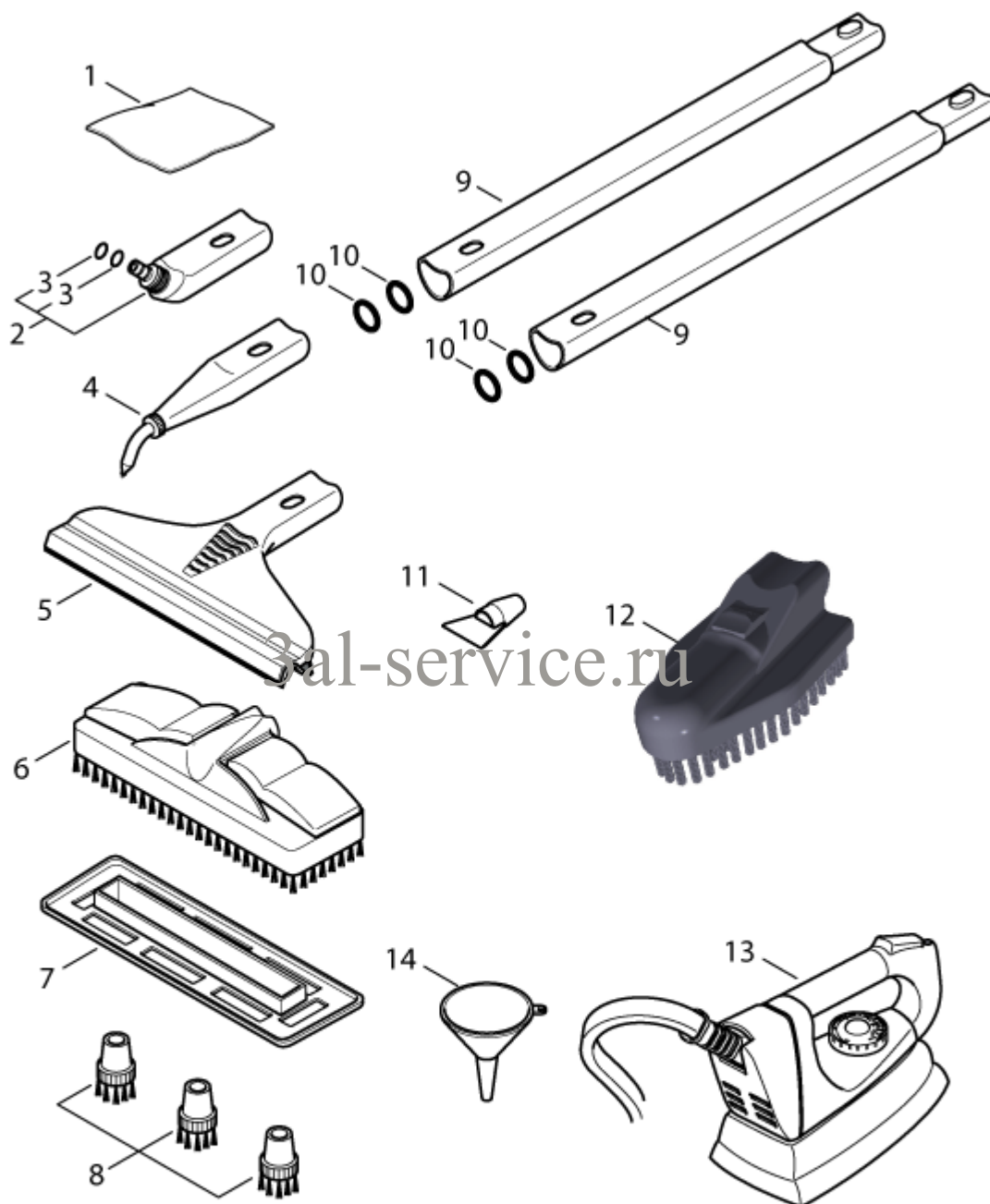
Accessories

STEAMTEC 312, 520, 51H

23-02-2015

Part List ID
STEAMTEC12

13



Accessories

STEAMTEC 312, 520, 51H

23-02-2015

Part List ID
STEAMTEC12

14

Pos	Part no.	Qty	Description	
0	303000519	1	CLOTH ACTIVE FIBRE STEAMTEC	Optional microfibre cloth for floor tool
1	303000423	1	FLOOR CLOTH 460X120X5	
2	303000424	1	ADAPTER 130X55X37	
3	9154	2	O-RING 10.82x1.78 ARP AS 568 A NBR70	
4	303000429	1	DETAIL NOZZLE STEAMTEC PA/CuZn	
5	303000426	1	WINDOW NOZZLE	
6	303000419	1	FLOOR BRUSH	
7	303000425	1	CARPET NOZZLE	OPTION
8	303000420	1	BRUSH KIT Ø23 STEAMTEC PA/CuZn	OPTION
9	303000521	2	EXTENSION PIPE STEAMTEC	
10	12960	4	O-RING 7.65X1.78 ARP AS 568 A NBR90	
11	303000430	1	SCRAPER	OPTION
12	303000427	1	CORNER BRUSH	OPTION
13	303000407	1	STEAM IRON 230/1/50	STEAMTEC 520, OPTION STEAMTEC 51H
14	303000428	1	FUNNEL	

3al-service.ru

STEAMTEC 312, 520, 51H

Part List ID	STEAMTEC14
--------------	------------

This diagram illustrates the exploded view of a mechanical assembly, likely a motorized device. The components are numbered 1 through 28. The main assembly includes a base (14), a central motor or actuator (5), and a housing (1). Other parts include a gear (3), a shaft (4), a pulley (6), a bracket (8), a cable (17), a spring (19), and various fasteners like screws (25, 26, 27) and pins (28). The diagram shows the relative positions and assembly sequence of these parts.

Steam ironing station

STEAMTEC 312, 520, 51H

23-02-2015

Part List ID
STEAMTEC14

16

Pos	Part no.	Qty	Description
0	31000200	1	STEAMTEC IRONBOARD All shown on drawing
1	67007	1	COVER
2	67044	1	ARTICULATED HANDLEBAR REAR RI
3	65406	1	COVER Ø 190X27
4	65405	1	MOTOR 110W/230V
5	65404	1	COOLING FAN Ø 142X60
6	67013	2	RETAINING CLAMP
7	67028	1	CASTOR Ø 48X16
8	67027	1	ROPE Ø 0.8X420
9	65409	1	TENSION SPRING 2.5X25X25
10	65408	1	SPRING 40X33X10
11	67043	1	ARTICULATED HANDLEBAR REAR LE
12	65402	1	HOUSING
13	65400	1	ARTICULATED HANDLEBAR FRONT L
14	67042	4	COVERING - BLUE
15	65403	1	LEVER
16	67041	2	DISTANCE PIECE KIT
17	28879	1	POWER CORD H05VV-F 3G1.5
18	303000302	1	BRACKET 47X29X29
19	303000303	1	BRACKET 475X111X4
20	67039	1	COVER
21	64764	1	SCREENING UNIT 0.47 F/275
22	65401	1	ARTICULATED HANDLEBAR FRONT R
23	67003	1	BUSHING CLAMP
24	67035	1	COVER
25	65407	1	MICROSWITCH 250V 12-3-A
26	67040	1	CONTROL PANEL
27	65410	1	SOCKET 250AT 10-16A
28	303000058	2	SWITCH 10A 250VAC

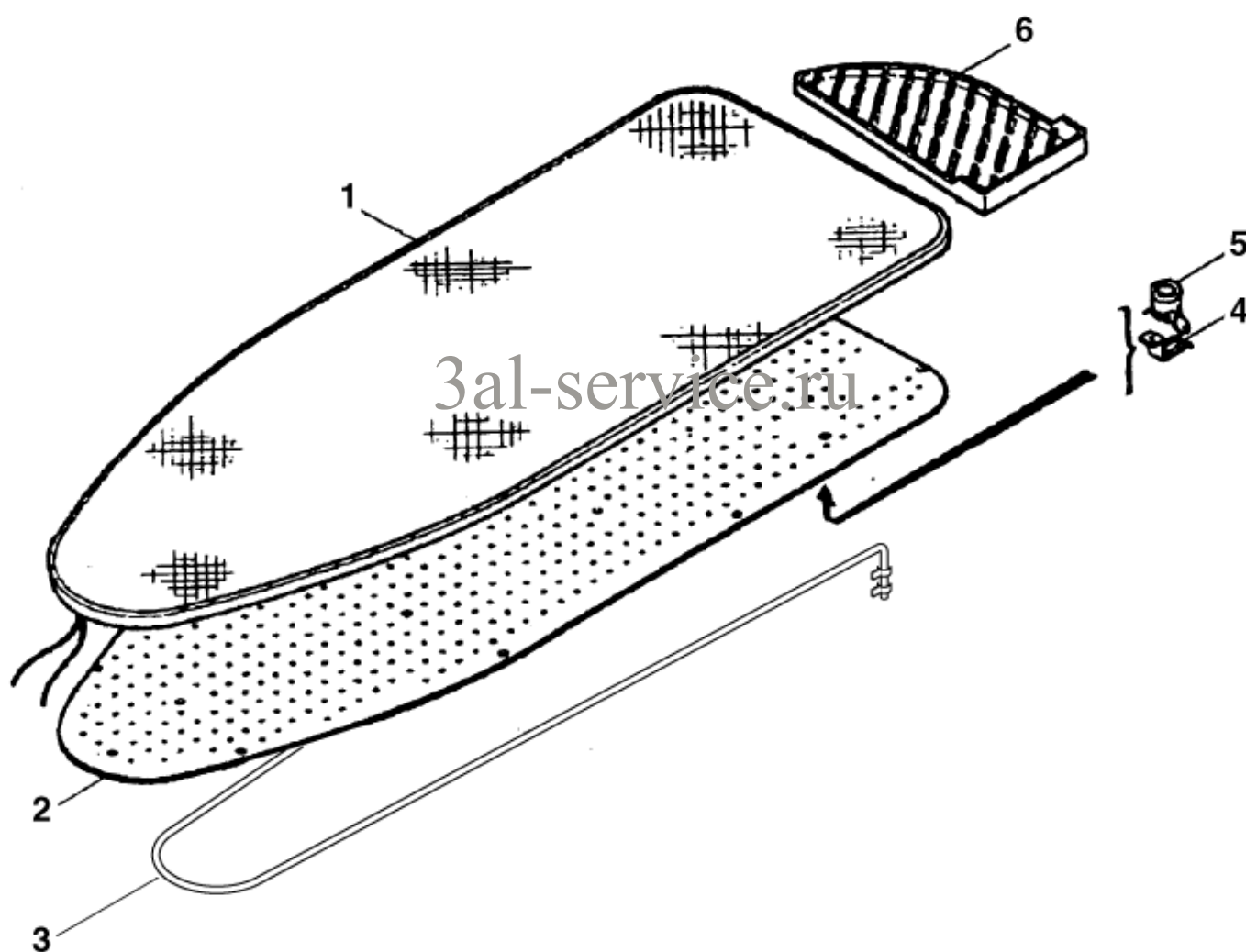
Steam ironing cover

STEAMTEC 312, 520, 51H

23-02-2015

Part List ID
STEAMTEC16

17



Steam ironing cover

STEAMTEC 312, 520, 51H

23-02-2015

Part List ID
STEAMTEC16

18

Pos	Part no.	Qty	Description
1	66025	1	COVER
2	67010	1	IRONING BOARD
3	67011	1	HEATER
4	64765	1	BRACKET
5	67026	1	SAFETY TEMPERATURE LIMITER
6	67005	1	IRON REST

3al-service.ru

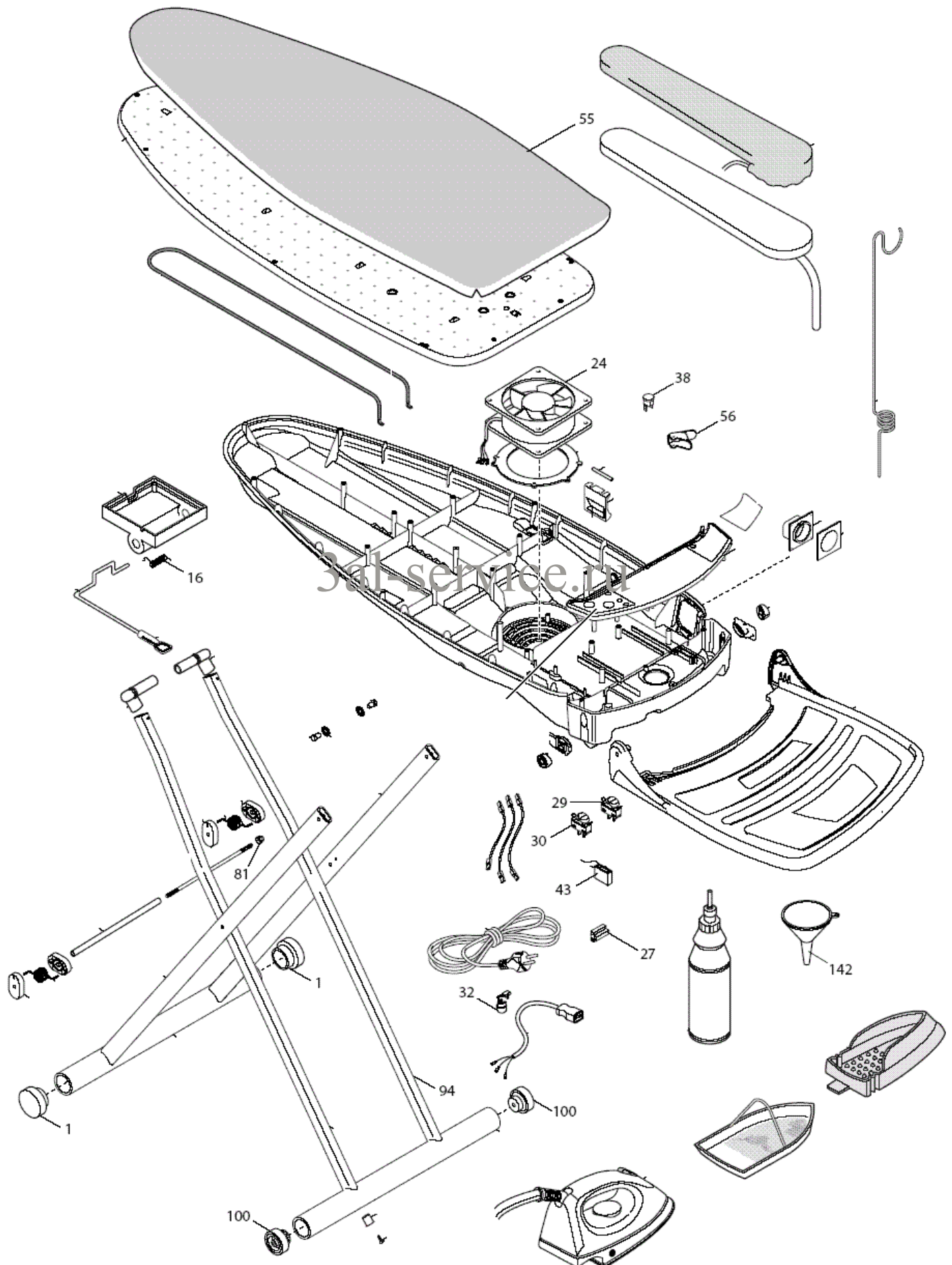
Steam ironing board version 2009 June

STEAMTEC 312, 520, 51H

23-02-2015

Part List ID
STEAMTEC18

19



Steam ironing board version 2009 June

STEAMTEC 312, 520, 51H

23-02-2015

Part List ID
STEAMTEC18

20

Pos	Part no.	Qty	Description
0	31000200	1	STEAMTEC IRONBOARD
1	31000157	1	ADJUSTABLE FEET SUPPORT D.40MM BLACK
16	65408	1	SPRING 40X33X10
24	31000158	1	MOTOR H.38 120x120 220/240V 50/60HZ
27	303000470	1	CONNECTOR HOUSING 3-POL.
29	31000159	1	UNIP. SWITCH UNIP.3P 8A 250V
30	31000160	1	UNIP. SWITCH WITH RED LED SR-06NR-N
32	67003	1	BUSHING CLAMP
38	31000161	1	THERMOSTAT T.80 WITH CLAMP FS
43	31000162	1	CAPACITOR CX 0.47 UF PB 4.8
55	31000163	1	IRON. BOARD CLOTH
56	303000482	1	BRACKET 76X39X21
100	31000164	1	WHEEL D 40 WITH RUBBER
142	303000428	1	FUNNEL

3al-service.ru