

TSX



SPARE PARTS LIST
LISTE DES PIÈCES DE RECHANGE
AUFLISTUNG DER ERSATZTEILE
LISTA DE REPUESTOS
NOMENCLATURA PEÇAS SOBRESSAIENTES
NOMENCLATURA RICAMBI
LISTE OVER RESERVEDELE
LIJST VERVANGINGSONDERDELEN
RESERVDELSLISTA
VARAOSALUETTELO
LISTE OVER RESERVEDELER
Λίστα ανταλλακτικών

3al-service.ru



CAUTION

Warning:

Repairs must be carried out by skilled personnel only

Précaution:

Confier la réparation uniquement à du personnel qualifié

Vorsicht:

Reparierung nur von Fachleuten vornehmen lassen

PRECAUCIÓN:

La reparación es de exclusiva competencia de personal experto.

PRECAUÇÕES:

O conserto deve ser feito somente por pessoas tecnicamente qualificadas.

PRECAUZIONE:

Affidare la riparazione unicamente a personale esperto.

BEMÆRK:

overlad udelukkende reparation til specialuddannet personale.

LET OP:

Laat reparaties uitsluitend door vakkundig personeel uitvoeren

OBSERVERA!

Låt endast kompetent personal sköta reparationerna.

HUOMIO:

Laitteen korjaus tulee uskoa ainoastaan alan asiantuntijalle

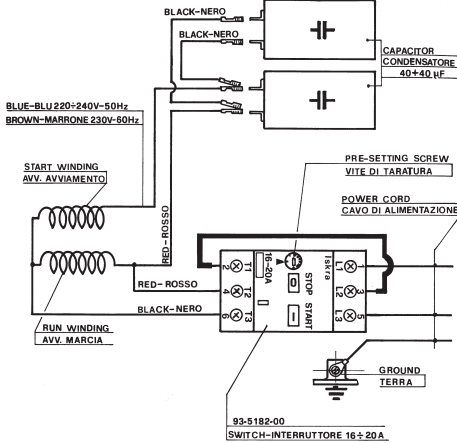
FORSIKTIG:

Reparasjoner skal kun utføres av kvalifisert personell

ΠΡΟΣΟΧΗ!:

Οι επισκευές γίνονται μόνο από ειδικευμένο προσωπικό

SERIES "TSX"



MOD. TSX 10.130

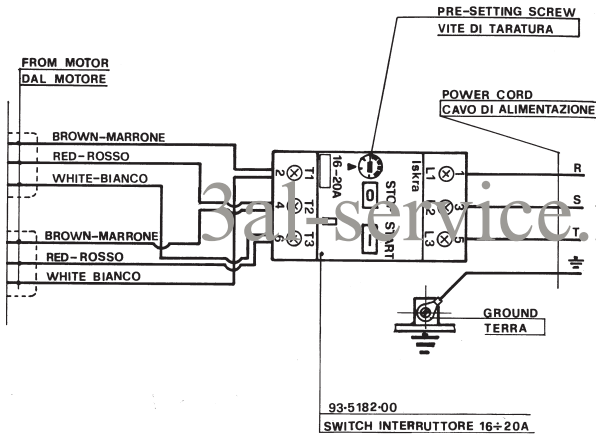
MOD. TSX 12.100

MOD. TSX 951

MOD. TSX 954

MOD. TSX 957

SINGLE-PHASE
MONOPHASE
EINPHASIG
MONOFASICO
MONOFASE
ENFASET
EENFASIG
ENFAS
YKSIVAIHEINEN
ENFASET
ΜΟΝΟΦΑΣΙΚΟ



MOD. TSX 12.140

MOD. TSX 14.120

MOD. TSX 13.180

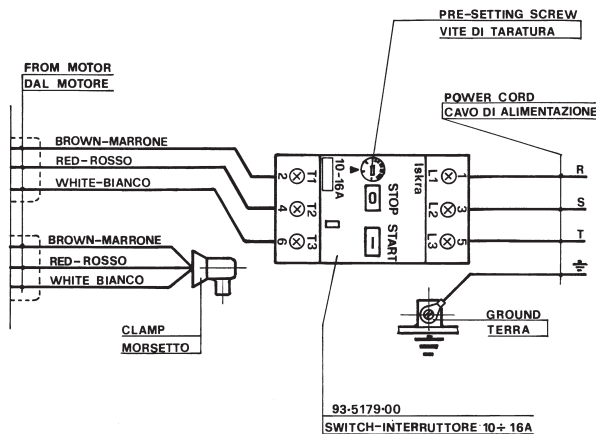
MOD. TSX 15.150

MOD. TSX 17.130

MOD. TSX 961

MOD. TSX 956

THREE-PHASE
TRIPHASE
DREIPHASIG
TRIFASICO
TRIFASICA
TRIFASE
TREFASET
DRIEFASIG
TREFAS
KOLMIVAIHEINEN
TREFASET
ΤΡΙΦΑΣΙΚΟ



MOD. TSX 12.140

MOD. TSX 14.120

MOD. TSX 13.180

MOD. TSX 15.150

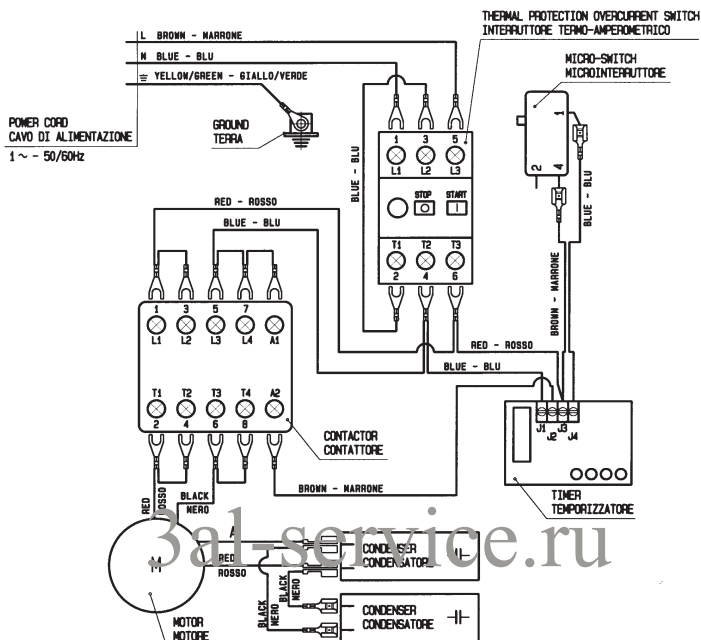
MOD. TSX 17.130

MOD. TSX 961

MOD. TSX 956

THREE-PHASE
TRIPHASE
DREIPHASIG
TRIFASICO
TRIFASICA
TRIFASE
TREFASET
DRIEFASIG
TREFAS
KOLMIVAIHEINEN
TREFASET
ΤΡΙΦΑΣΙΚΟ

TOTAL STOP VERSION - VERSIONE CON TOTAL STOP



	230 V 50Hz	220 V 60Hz	240 V 50Hz
A	BLUE BLU	BROWN MARRONE	WHITE BIANCO

MOD. TSX 10.130

MOD. TSX 12.100

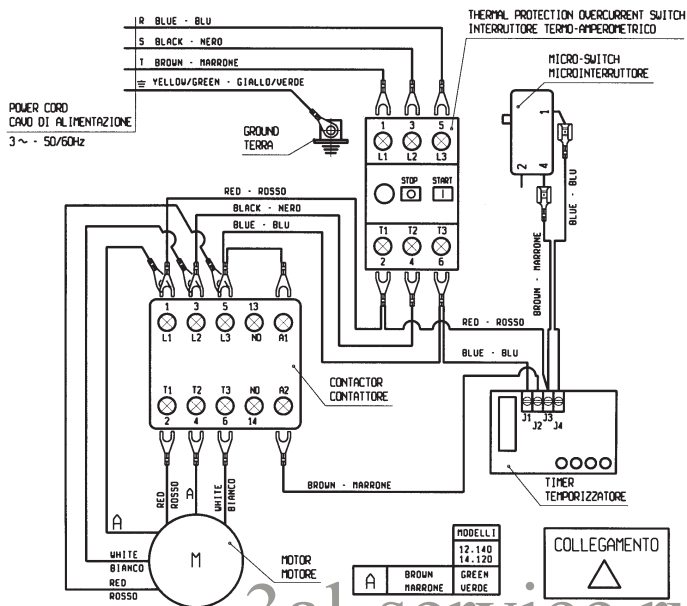
MOD. TSX 951

MOD. TSX 954

MOD. TSX 957

SINGLE-PHASE
MONOPHASE
EINPHASIG
MONOFÁSICO
MONOFÁSICA
MONOFASE
ENFASET
EENFASIG
ENFAS
YKSIVAIHEINEN
ENFASET
ΜΟΝΟΦΑΣΙΚΟ

TOTAL STOP VERSION - VERSIONE CON TOTAL STOP

**MOD. TSX 12.140****MOD. TSX 14.120****MOD. TSX 13.180**

MOD. TSX 15.150

MOD. TSX 17.130

MOD. TSX 961

MOD. TSX 956

THREE-PHASE

TRIPHASE

DREIPHASIG

TRIFÁSICO

TRIFÁSICO

TRIFASE

TREFASET

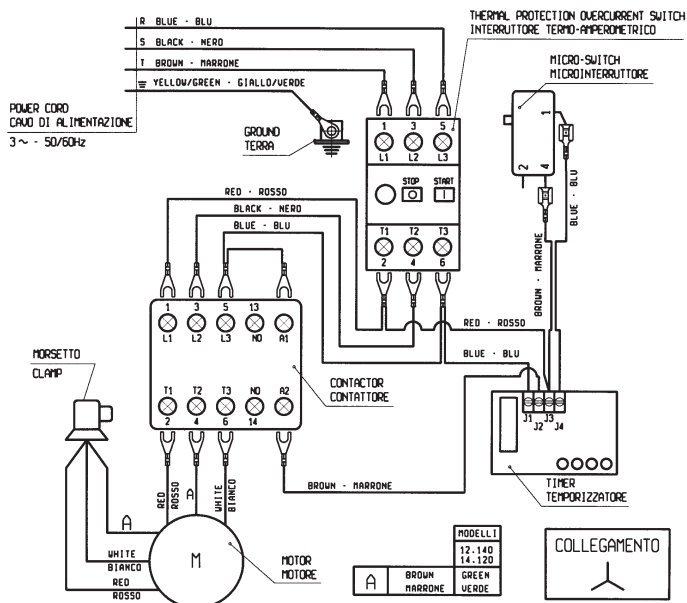
DRIEFAS

TREFAS

KOLMIVAIHEINEN

TREFASET

ΤΡΙΦΑΣΙΚΟ



MOD. TSX 12.140

MOD. TSX 14.120**MOD. TSX 13.180****MOD. TSX 15.150****MOD. TSX 17.130**

MOD. TSX 961

MOD. TSX 956

THREE-PHASE

TRIPHASE

DREIPHASI

TRIFÁSICO

TRIFÁSICO

TRIFASE

TREFASE

DRIEFAS

TREFAS

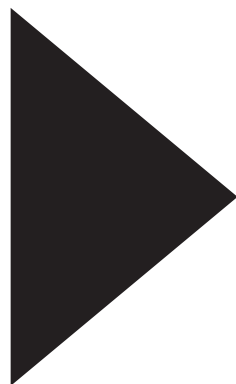
KOLMIVAIHEINEN

TREFASET

ΤΡΙΦΑΣΙΚΟ

**SPARE PARTS KIT
JEU DE PIÈCES DE RECHANGE
ERSATZTEILKASTEN
KIT DE REPUESTOS
ESTOJO PEÇAS SOBRESSAIENTES
KIT RICAMBI
RESERVEDELSSET
SET VERVANGINGSONDERDELEN
SET MED RESERVDELAR
VARAOSAT
SETT MED RESERVEDELER
Λίστα ανταλλακτικών**

3al-service.ru



TSX10.130 - TSX12.100 - TSX951 TSX954 - TSX957

SPARE PARTS LIST

LISTE DES PIÈCES DE RECHANGE

AUFLISTUNG DER ERSATZTEILE

LISTA DE REPUESTOS

NOMENCLATURA PEÇAS SOBRESSALENTES

NOMENCLATURA RICAMBI

LISTE OVER RESERVEDELE

LIJST VERVANGINGSONDERDELEN

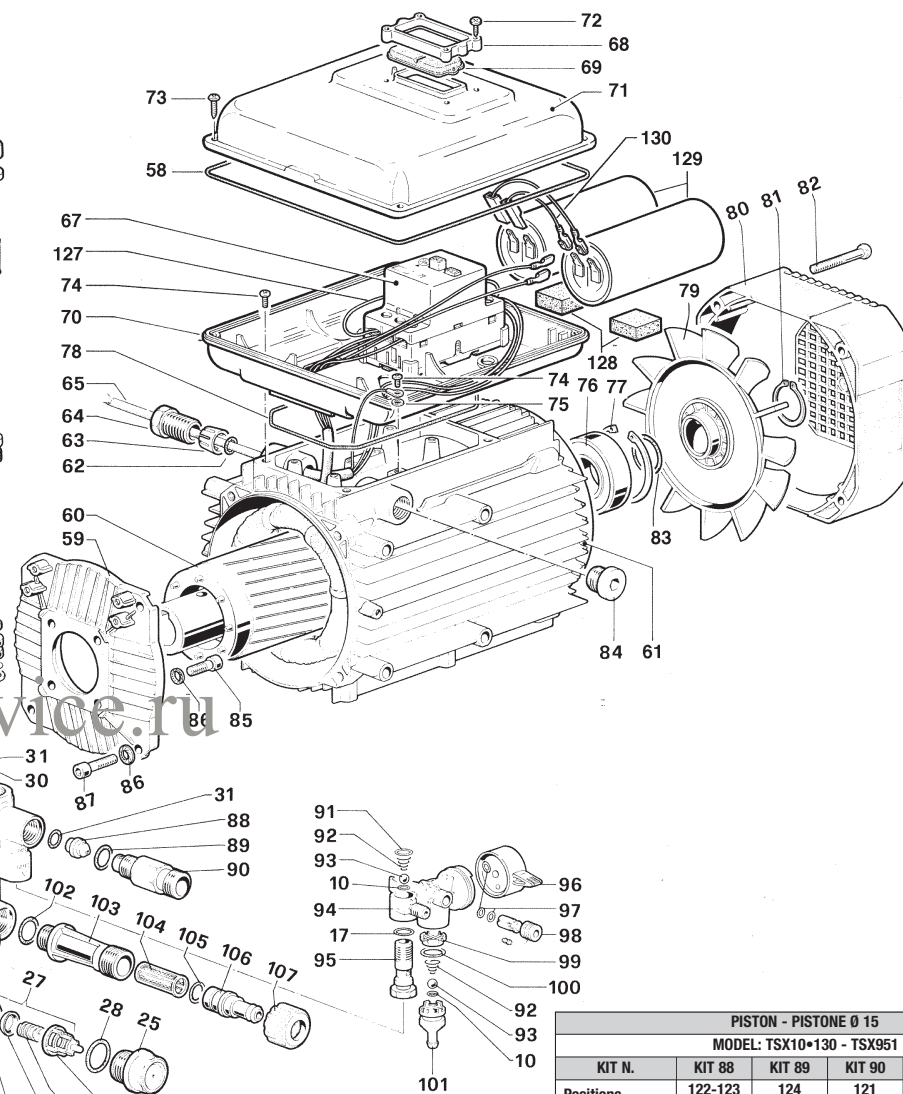
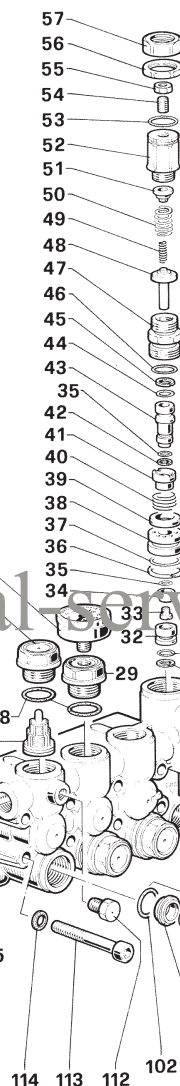
RESERVDELISLISTA

VARAOSALUETTELO

LISTE OVER RESERVEDELER

Λίστα ανταλλακτικών

POS.	CODE CODICE	N. PCS.	POS.	CODE CODICE	N. PCS.	POS.	CODE CODICE	N. PCS.
1	44.0100.22	1	58	43.2101.82	1	115	44.1201.41 - 015	1
2	91.8328.00	2	59	10.0501.22	1	116	44.1205.41 - 018	1
3	90.4097.00	1	60	43.3401.02	1	117	96.7514.00	1
4	44.2118.01	1	61	43.3201.02 - 230V-50Hz	1	118	98.2176.00	1
5	99.1807.00	4		43.3203.02 - 220V-60Hz		119	90.1614.00	3
6	50.1500.74	1		43.3208.02 - 240V-50Hz		120	96.7380.00	1
7	92.2216.00	3	62	90.4028.00	1		98.2100.00	1
8	44.2115.70	3	63	43.2128.51	1	121	51.1000.51 - 015	3
9	52.0400.09 - 015	3	64	43.2127.51	1		44.1001.51 - 018	
	44.0401.09 - 018		65	10.7269.01	1	122	90.2620.00 - 015	3
10	90.3572.00	5	67	93.5182.00 - 230/240V	1	123	90.2682.00 - 018	3
11	90.5022.00	3	68	43.2120.51	1		90.2622.00 - 015	
12	96.7350.00	3	69	43.2119.47	1	124	90.2683.00 - 018	3
13	44.0500.66	3	70	43.2115.51	1		52.2166.70 - 015	3
14	97.7340.00	3	71	43.2116.51	1		44.2161.70 - 018	
15	44.0300.22	3	72	99.0744.00	4	125	44.0800.70 - 015	3
16	98.2041.00	1	73	99.1580.00	4		44.0801.70 - 018	
17	90.3585.00	2	74	99.1515.00	5	126	90.3612.00	3
18	99.1837.00	5	75	96.6913.00	1	127	42.2115.86	1
19	44.1600.22	1	76	91.8372.00	1	128	43.2102.81	2
20	90.3920.00	1	77	90.0850.00	1	129	93.5648.00	2
21	91.4892.00	1	78	90.4146.00	1	130	10.7232.01	2
22	44.0206.35 - TSX10.130	1	79	41.0301.51	1	131	90.2617.00 - 015	3
	TSX951 - TSX957		80	41.0400.51	1		90.2684.00 - 018	
	44.0203.35 - TSX12.100		81	90.0655.00	1	TOTAL STOP VERSION - VERSIONE TOTAL STOP		
	TSX954		82	99.1658.00	4			
23	98.2103.00	1	83	90.3863.00	1	155	44.1210.41 - 015	1
24	90.1641.00	1	84	98.2173.00	1		44.1211.41 - 018	
25	98.2226.00	5	85	99.1867.00	4	156	93.6342.00 - TSX10.130	1
26	94.5824.00	1	86	96.6938.00	8		TSX12.100	
27	36.7115.01	6	87	99.1897.00	4		93.6344.00 - TSX951	
28	90.3847.00	6		10.0151.66			TSX954	
29	98.2227.00	1	88	10.0307.66	1		TSX957	
30	90.5065.00	1		TSX10.130 - TSX951		157	93.6430.00	1
31	90.3822.00	2	89	90.3832.00	1	158	10.7373.01	1
32	36.3164.66	1		10.0147.70 - M22		159	10.0610.51	1
33	99.1509.00	1	90	10.0078.70 - G3/8	1	160	93.5415.00	1
34	36.3190.66	1	91	90.3582.00	1	161	10.7375.01	1
35	90.3575.00	2	92	94.8217.00	2	162	90.3885.00	1
36	90.5144.00	1	93	97.4782.00	2	163	10.0611.66	1
37	90.3600.00	1	94	36.3216.51	1	164	92.9740.00	1
38	36.3229.70	1	95	36.2563.70	1	165	90.3817.00	1
39	36.3231.51	1	96	36.3217.51	1	166	90.3578.00	1
40	94.7485.00	1	97	90.3570.00	3	167	10.0613.70	1
41	36.3230.70	1	98	36.3220.51	1	168	90.3591.00	1
42	90.5025.00	1	99	36.3219.51	1	169	90.5020.00	1
43	36.3234.70	1	100	90.3831.00	1	170	90.3570.00	1
44	90.3820.00	1	101	36.3218.51	1	171	10.0612.70	1
45	90.5052.00	1	102	90.3841.00	7	172	90.3819.00	1
46	90.3857.00	1	103	36.3182.51	1	173	90.5052.00	1
47	36.3228.70	1	104	92.8925.00	1	174	94.7341.00	1
48	36.3233.70	1	105	90.3828.00	1	175	99.0650.00	4
49	94.7345.00	1	106	36.2569.51	1	176	99.0840.00	1
50	94.7436.00	1	107	92.9828.00	1	177	43.2100.47	1
51	36.3169.70	1	108	36.2025.51	6		43.3205.02 - 230V-50Hz	
52	36.3185.70	1	109	94.7376.00	6	178	43.3206.02 - 220V-60Hz	1
53	90.3598.00	1	110	36.2001.76	6		43.3207.02 - 240V-50Hz	
54	99.3054.00	1	111	36.2003.66	6			
55	92.2218.00	1	112	98.1966.00	1			
56	92.2935.00	1	113	99.3175.00	8			
57	36.3186.70	1	114	96.7014.00				



KIT N.	KIT 23	KIT 123	KIT 124	KIT 137	KIT 138
Positions Included	118	102-108 109-110 111 (27)	25-28	30-31-32 33-34-35 36-37-38 39-40-41 42-43-44 45	10-17-9 92-93-9 98-99 100-101
Posizioni Incluse					
N. pcs.	3	6	6	1	1

PISTON - PISTONE Ø 18					
MODEL: TSX12*100 - TSX954 - TSX957					
KIT N.	KIT 126	KIT 127	KIT 128	KIT 129	KIT 131
Positions Included	125-126	123-122 149	124	121	121-122 123-124 125-126 149
Posizioni Include					
N. pcs.	3	3	3	6	1

TSX12.140 - TSX14.120 - TSX13.180 TSX15.150 - TSX17.130 - TSX956 - TSX961

SPARE PARTS LIST

LISTE DES PIÈCES DE RECHANGE

AUFLISTUNG DER ERSATZTEILE

LISTA DE REPUESTOS

NOMENCLATURA PEÇAS SOBRESSALENTE

NOMENCLATURA RICAMBI

LISTE OVER RESERVEDELE

LIJST VERVANGINGSONDERDELEN

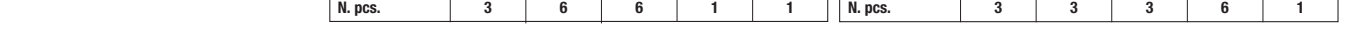
RESERVDELISLISTA

VAROASALUETTELO

LISTE OVER RESERVEDELER

Λίστα ανταλλακτικών

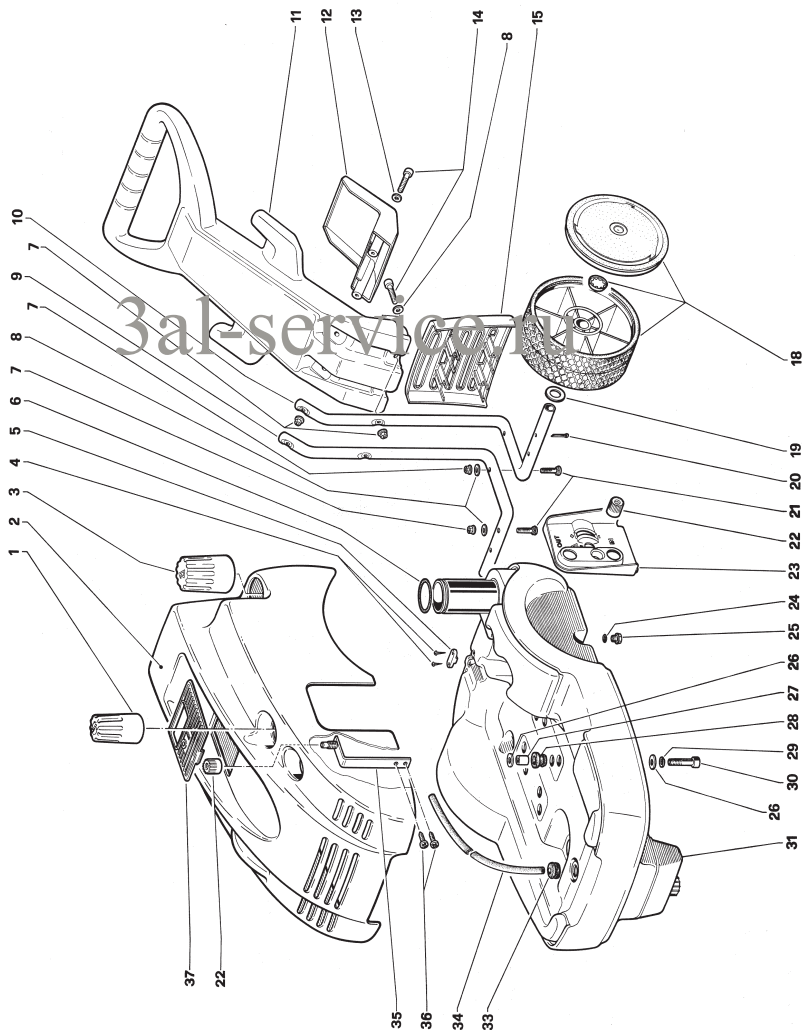
POS.	CODE CODICE	N. PCS.	POS.	CODE CODICE	N. PCS.	POS.	CODE CODICE	N. PCS.
1	44.0100.22	1	56	92.2935.00	1	108	36.2025.51	6
2	91.8328.00	2	57	36.3186.70	1	109	94.7376.00	6
3	90.4097.00	1	58	43.2101.82	1	110	36.2001.76	6
4	44.2118.01	1	59	10.0501.22	1	111	36.2003.66	6
5	99.1807.00	4	60	43.3430.02 - TSX14.120 - TSX12.140	1	112	98.1966.00	1
6	50.1500.74	1		43.3450.02 - TSX956		113	99.3175.00	8
7	92.2216.00	3		43.3460.02		114	96.7014.00	8
8	44.2115.70	3	61	43.3231.02 - TSX14.120 - TSX12.140	1	115	44.1201.41 - 015	1
9	52.0400.09 - 015	3		43.3268.02 - TSX961		44.1205.41 - 018		
	43.3261.02 - TSX13.180			116		96.7514.00	1	
10	90.3572.00	5	TSX15.150 - TSX17.130	117	98.2176.00	1		
11	90.5022.00	3	43.3250.02 - TSX956	118	90.1614.00	3		
12	96.7350.00	3	62	90.4028.00	119	96.7380.00	1	
13	44.0500.66	3	63	43.2128.51	120	98.2100.00	1	
14	97.7340.00	3	64	43.2127.51	121	51.1000.51 - 015	3	
15	44.0300.22	3	65	10.7273.01		44.1001.51 - 018		
16	98.2041.00	1	66	93.5790.00	122	90.2620.00 - 015	3	
17	90.3585.00	2	67	93.5179.00 - 400/415V	90.2682.00 - 018			
18	99.1837.00	5		93.5182.00 - 230/240V	123	90.2622.00 - 015	3	
19	44.1600.22	1	68	43.2120.51	90.2683.00 - 018			
20	90.3920.00	1	69	43.2119.47	124	52.2166.70 - 015	3	
22	91.4892.00	1	70	43.2115.51	44.2161.70 - 018			
	44.0200.35 - TSX13.180		71	4.21.6.51	125	44.0800.70 - 015	3	
	TSX961		72	9.0744.00		44.0801.70 - 018		
	44.0203.35 - TSX15.150		73	99.1580.00	126	90.3612.00	3	
TSX12.140 - TSX956	74	99.1515.00	149	90.2617.00 - 015	3			
44.0206.35 - TSX14.120	75	96.6913.00		90.2684.00 - 018				
TSX17.130	76	91.8372.00	TOTAL STOP VERSION - VERSIONE TOTAL STOP					
23	98.2103.00	1	77	90.0850.00	155	44.1210.41 - 015	1	
24	90.1641.00	1	78	90.4146.00	1	44.1211.41 - 018	1	
25	98.2226.00	5	79	42.0300.51	156	93.6340.00-400V50/60Hz	1	
26	94.5824.00	1	80	43.0400.51		93.6342.00-230V50/60Hz		
27	36.7115.01	6	81	90.0655.00	157	93.6344.00 - TSX 961	1	
28	90.3847.00	6	82	99.1658.00		93.6415.00-400V50/60Hz		
29	98.2227.00	1	83	90.3863.00	93.6430.00-230V50/60Hz	1		
30	90.5065.00	1	84	98.2173.00	158	10.7374.01	1	
31	90.3822.00	2	85	99.1867.00	159	10.0610.51	1	
32	36.3164.66	1	86	96.6938.00	160	93.5415.00	1	
33	99.1509.00	1	87	99.1897.00	161	10.7375.01	1	
34	36.3190.66	1	88	10.0151.66	162	90.3885.00	1	
35	90.3575.00	2		10.0307.66 - TSX13.180	163	10.0611.66	1	
36	90.5144.00	1	89	90.3832.00	164	92.9740.00	1	
37	90.3600.00	1	90	10.0147.70 - M22	165	90.3817.00	1	
38	36.3229.70	1		10.0078.70 - G3/8	166	90.3578.00	1	
39	36.3231.51	1	91	90.3582.00	167	10.0613.70	1	
40	94.7485.00	1	92	94.8217.00	168	90.3591.00	1	
41	36.3230.70	1	93	97.4782.00	169	90.5020.00	1	
42	90.5025.00	1	94	36.3216.51	170	90.3570.00	1	
43	36.3234.70	1	95	36.2563.70	171	10.0612.70	1	
44	90.3820.00	1	96	36.3217.51	172	90.3819.00	1	
45	90.5052.00	1	97	90.3570.00	173	90.5052.00	1	
46	90.3857.00	1	98	36.3220.51	174	94.7341.00	1	
47	36.3228.70	1	99	36.3219.51	175	99.0650.00	4	
48	36.3233.70	1	100	90.3831.00	176	99.0840.00	1	
49	94.7345.00	1	101	36.3218.51	177	43.2100.47	1	
50	94.7436.00	1	102	90.3841.00				
51	36.3169.70	1	103	36.3182.51				
52	36.3185.70	1	104	92.8925.00				
53	90.3598.00	1	105	90.3828.00				
54	99.3054.00	1	106	36.2569.51				
55	92.2218.00	1	107	92.9828.00				



PISTON - PISTONE Ø 18					
MODEL: TSX14*120 - TSX12*140 - TSX956					
KIT N.	KIT 126	KIT 127	KIT 128	KIT 129	KIT 131
Positions Included	125-126	123-122 149	124	121	121-122 123-124 125-126 149
Posizioni Include					
N. pcs.	3	3	3	6	1

TROLLEY - CARRELLO TSX

- SPARE PARTS LIST
- LISTE DES PIÉCES DE RECHANGE
- AUFLISTUNG DER ERSATZTEILE
- LISTA DE REPUESTOS
- NOMENCLATURA PECAS SOBRESSALENTES
- NOMENCLATURA RICAMBI
- LIJST OVER RESERVEDEILE
- LIJST VERVANGINGSONDERDELEN
- RESERVELIST
- VARAOSALUETTELO
- LISTE OVER RESERVEDELER
- Λίστα ανταλλακτικών

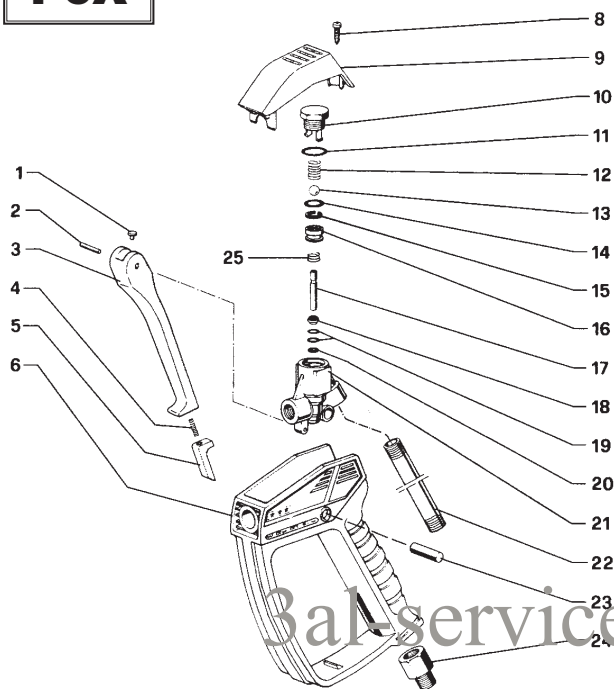


DIS. COD. 23.9526.00

POS.	CODE	N.
	CODICE	PCS.
1	36.3221.51	1
2	23.0178.51	1
3	23.0087.51	1
4	99.1312.00	2
5	23.0095.51	1
6	90.3889.00	1
7	92.2040.00	8
8	96.6962.00	6
9	23.0089.88	1
10	23.0088.88	1
11	23.0093.51	1
12	23.0102.51	1
13	96.6925.00	2
14	99.1943.00	4
15	23.0086.51	1
18	96.9327.00	2
19	96.7521.00	2
20	91.7129.00	2
21	99.1929.00	4
22	52.2122.51	2
23	23.0090.51	1
24	90.3818.00	1
25	98.2041.00	1
26	96.7072.00	8
27	23.0099.70	4
28	23.0098.47	4
29	96.7016.00	4
30	99.3129.00	4
31	23.0092.02	1
33	23.0101.47	1
34	10.0529.98	1
35	23.0192.02	1
36	99.1474.00	2
37	23.0183.51	1

ACCESSORIES FOR TSX SERIES

P3X

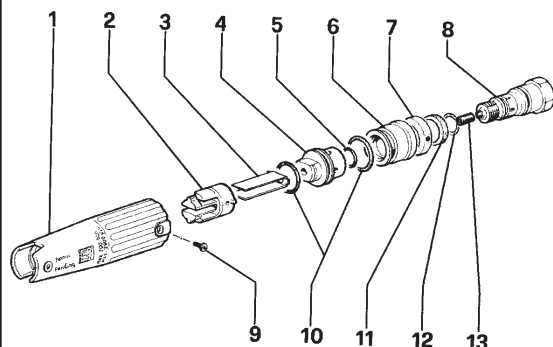


POS.	CODE CODICE	N. PCS.
1	18.2082.64	1
2	97.6143.00	1
3	18.2079.51	1
4	94.7303.00	1
5	18.2050.51	1
6	18.2080.51	1
8	99.0845.00	1
9	18.2081.51	1
10	18.2075.70	1
11	90.3593.00	1
12	94.7342.00	1
13	97.4810.00	1
14	90.3585.00	1
15	90.5068.00	1
16	18.2074.66	1
17	18.2076.66	1
18	18.2077.70	1
19	90.3568.00	2
20	90.5007.00	1
21	18.2073.41	1
22	18.2083.89	1
23	97.6200.00	1
24	ZINA 1/4F	1
25	94.7351.00	1

KIT N.	KIT 116
Position Included Posizioni Incluse	10 - 11 - 12 - 13 14 - 15 - 16
N. pcs.	1

DIS. COD. 18.9515.00

"MULTIREG99"



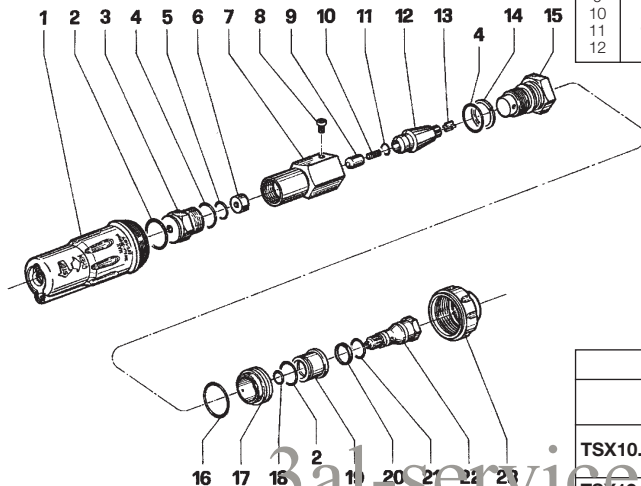
POS.	CODE CODICE	N. PCS.	POSITION 13	
			SERIES	CODE
1	10.0483.51	1	TSX10-130	130
2	10.0299.51	1	TSX12-100	150
3	10.1304.76	1	TSX12-140	140
4	10.0486.70	1	TSX14-120	155
5	90.3819.00	1	TSX13-180	135
6	10.0485.70	1	TSX15-150	155
7	10.0496.70	1	TSX17-130	175
8	10.0484.70	1	TSX951	145
9	99.0702.00	2	TSX954	165
10	90.3845.00	2	TSX957	180
11	90.2680.00	1	TSX961	155
12	90.3828.00	1	TSX956	155

DIS. COD. 10.9526.00

ACCESSORIES FOR TSX SERIES

"ROTOTEK"

POS.	CODE CODICE	N. PCS.	POS.	CODE CODICE	N. PCS.
1	10.0568.51	1	13	10.0453.51	1
2	90.3845.00	2	14	90.5090.00	1
3	10.0450.70	1	15	Tab. "A"	
4	90.3835.00	2	16	90.3867.00	1
5	90.3585.00	1	17	10.0567.51	1
6	10.0455.09	1	18	90.3819.00	1
7	10.0451.70	1	19	10.0485.70	1
8	99.0702.00	1	20	90.2680.00	1
9	10.0456.09	1	21	90.3828.00	1
10	Tab. "A"		22	10.0484.70	1
11	90.3574.00	1	23	10.0566.51	1
12	10.0564.02	1			

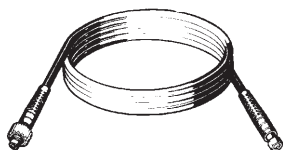


TAB. "A"

SERIES	POS.	SERIES	N. PCS.
TSX10.130 - TSX13.180	10	140	1
	15	10.0472.70	1
TSX12.100 - TSX951	10	150	1
TSX12.140	15	10.0454.70	1
TSX14.120 - TSX15.150	10	160	1
TSX961 - TSX956	15	10.0471.70	1
TSX17.130	10	175	1
TSX954 - TSX957	15	10.0471.70	1

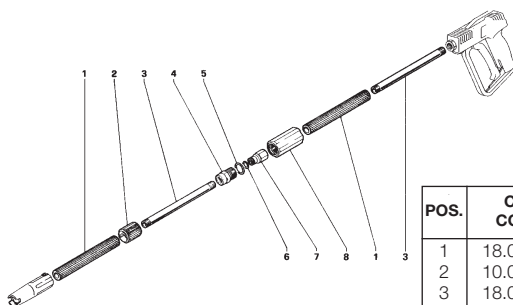
DIS. COD. 10.9545.00

- HIGH PRESSURE HOSE
- TUYAU HAUTE PRESSION
- HOCHDRUCKSCHLAUCH
- TUBO DE ALTA PRESION
- TUBO ALTA PRESSIONE



ORD. CODE: ZTXTUBO8 (8 m)

"TSX LANCE"



POS.	CODE CODICE	N. PCS.
1	18.0126.98	2
2	10.0542.51	1
3	18.0127.89	2
4	10.0120.70	1
5	90.3845.00	1
6	90.3820.00	1
7	10.0534.70	1
8	10.0532.02	1

DIS. COD. 18.9514.00

BRUSHKIT



ORD. CODE: **ZTXBRUSH**

- ROTATING BRUSH
- BROSE ROTATIVE
- DREHBARE BÜRSTE
- CEPILLO ROTATIVO
- ESCOVA ROTATIVA
- SPAZZOLA ROTANTE
- RÖTERENDE BØRSTE
- RÖTERENDE BØRSTEL
- RÖTERANDE BØRSTE
- PYÖRIVÄ HARJA
- RÖTERENDE BØRSTE
- ΠΕΡΙΣΤΡΕΦΟΜΕΝΗ ΒΟΥΡΤΣΑ

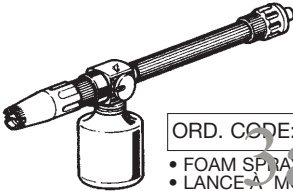
ROTOTEK KIT



ORD. CODE: **ZTX ROK**

- MULTIFUNCTION ROTATING NOZZLE
- BUSE ROTATIVE MULTIFONCTION
- DREHBARE MEHRZWECKDÜSE
- BOQUILLA ROTATIVA MULTIFUNCIÓN
- BICO ROTATIVO MULTIFUNÇÃO
- UGELLO ROTANTE MULTIFUNZIONE
- RÖTERENDE DYSE MED FLERE FUNKTIONER
- MULTIFUNCTIONEEL RÖTEREND MONDSTUK
- RÖTERANDE MUNSTYCKE
- PYÖRIVÄ MONITOIMISUUTIN
- RÖTERENDE MUNNSTYKKE
- ΠΟΛΥΛΕΙΤΟΥΡΓΙΚΟ ΠΕΡΙΣΤΡΕΦΟΜΕΝΟ ΑΚΡΟΦΥΣΙΟ

FOAMKIT



ORD. CODE: **ZTXFOAM**

- FOAM SPRAYER
- LANCE-A MOUSSE
- SCHAUMLANZE
- LANZA PARA ESPUMA
- LANÇA-ESPUMA
- LANCIA SCHIUMA
- SKUMLANSE
- SCHUIMTOEVOERDER
- SKUMLANS
- VAAHTOSUUTIN
- SKUMSPRØYTE
- ΠΙΣΤΟΛΕΤΟ ΑΦΡΟΥ

INTERFOAM



ORD. CODE: **ZDET**

- FOAM DETERGENT
- DETERGENT MOUSSANT
- SCHAUMDETERGENT
- DETERGENTE ESPUMÓGENO
- DETERGENTE ESPUMANTE
- DETERGENTE SCHIUMOGENO
- SKUMVASKEMIDDEL
- SCHUIMEND REINIGINGSMIDDEL
- SKUMSCHAMPO
- VAAHTOMAINEN PESUAINEN
- SKUMVASKEMIDDEL
- ΑΦΡΩΔΕΣ ΑΠΟΡΡΥΠΑΝΤΙΚΟ

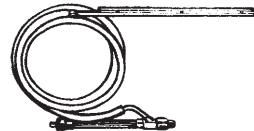
DRAINKIT



ORD. CODE: **ZTXDRAIN**

- DRAIN CLEANING KIT
- JEU DE NETTOYAGE DES TUBES
- RÖHREINIGUNGSKIT
- KIT DE LIMPIEZA DE TUBERÍAS
- ESTOJO LIMPEZA TUBAGENS
- KIT PULIZIA TUBAZIONI
- RÖRRENSSÆT
- REINIGINGSSET LEIDINGEN
- RÖRRENSNINGSSSET
- LETKUJEN PESUTARVIKKEET
- RÖRRENGJØRINGSUTSTYR
- KIT ΚΑΘΑΡΙΣΜΟΥ ΣΩΛΗΝΩΣΕΩΝ

SANDKIT



ORD. CODE: **ZTXSAND**

- SAND-BLASTING KIT
- KIT DE SABLAGE
- SANDSTRAHLKIT
- KIT ARENADOR
- CABEÇA DE AREIAMENTO
- TESTINA SABBIANTE
- SANDBLÆSNINGSSÆT
- ZANDKOP
- SANDBLÅSTER
- HIEKKAPUHALLUSSUUTIN
- SANDBLÅSER
- ΚΕΦΑΛΗ ΑΜΜΟΒΟΛΗΣ