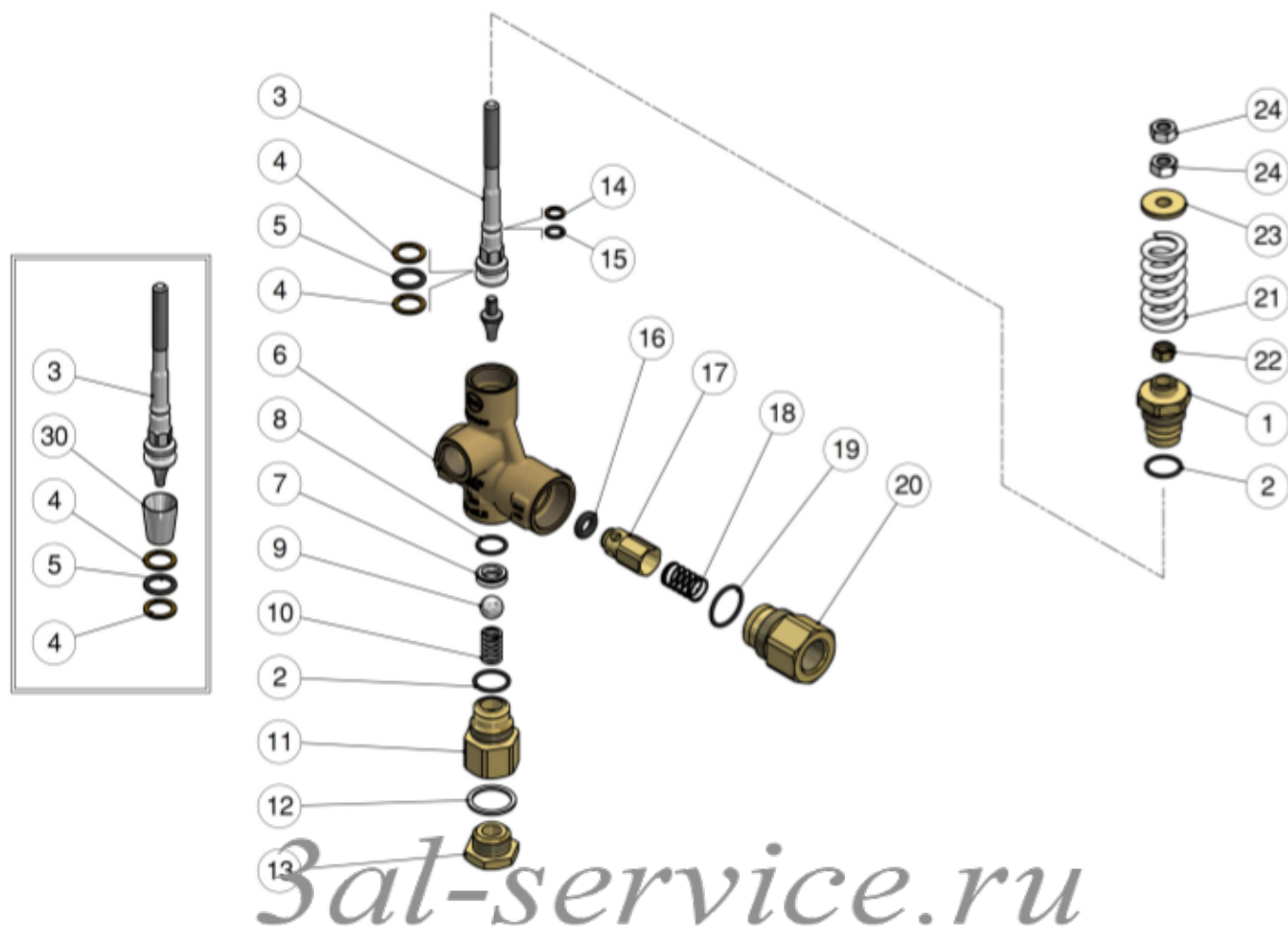


60.0423.00 VB 85Rv/180 unload. 1/2F Bsp  
 60.0423.04 VB85/160 R unload.1/2F Bsp +gaug.port 1/4  
 60.0423.05 VB85 Rv/180 unload. 1/2F Npt

60.0423.60 VB85 Rv/310 unload. 1/2F Bsp  
 60.0423.65 VB85 Rv/310 unload. 1/2F Npt F



Pos.	P/N	Description	Q.ty	K1	K2	K3	K4
1	60.0491.31	Piston holder, brass	1				3
2	10.3068.00	O-ring, 1,78x17,17 mm	2	*			10
3	60.0416.21	Valve piston, Sst.-VB85R-Rv	1				5
4	10.3178.00	O-ring, 2,62x13,1 mm	1	*			10
5	10.4014.00	Back-up ring, opn. 18x13,5x1,2 mm	2	*			10
6	60.0486.35	Housing -VB85, 1/2F Bsp brass	1				3
6	60.0497.35	Housing -VB85, 1/2F Npt brass (1,2)	1				3
6	60.0495.35	Housing -VB85, 1/2F+1/4 Bsp brass (3)	1				1
7	60.2803.51	Sst seat, 10 mm	1	*			5
8	10.3064.01	O-ring, 1,78x14 mm Ni 85	1	*			10
9	14.7465.00	Ball, 1/2" Sst.	1	*			5
10	30.5304.51	Spring, 2x29x9,9 mm Sst.	1				5
11	60.0441.31	Suction coupl., 1/2F Bsp brass	1				3
11	60.0496.31	Suction coupl., 1/2F Npt brass (1,2)	1				3
12	14.4290.00	Washer, 22x27x1,5 mm alu. (4,5)	1				10
13	60.0444.31	Grub screw, brass 1/2 Npt (1,2)	1				10

\*\* On request

Kit	P/N	Description	Q.ty
K1	60.0468.24	Spares kit -VB85R-Rv, 10x1pcs.	1

(1) 60.0423.05 (2) 60.0423.65 (3) 60.0423.04 (4) 60.0423.00 (5) 60.0423.60

Pos.	P/N	Description	Q.ty	K1	K2	K3	K4
13	60.0413.31	Plug,brass 1/2 Bsp, hex.27 (4,5)	1				10
14	10.4008.00	Back-up ring, opn. 8x11x1,2 mm	1	*			10
15	10.3055.00	O-ring, 1,78x7,66 mm	1	*			10
16	10.3292.00	O-ring, 4x8 mm	1	*			5
17	60.0488.99	Shutter pin, brass+or 4x8 mm	1				5
18	60.0489.51	Spring, 0,8x13,3x27 mm Sst.	1				5
19	10.3072.60	O-ring, 1,78x21,95 mm Ni 85	1	*			10
20	60.2809.31	Shutter coupl., 1/2F Bsp brass	1				3
20	60.1852.31	Shutter coupl., 1/2F Npt brass (1,2)	1				3
21	60.0012.61	Spring, 5x25x50 mm white (4,1)	1				5
21	60.0033.61	Spring, 5,7x26x53 mm blue (5,2)	1				5
22	11.4576.31	Hex. nut, M8, brass	1				10
23	60.0011.31	Spring holder ring, brass	1				5
24	11.4574.00	Hex. nut, M8	2				10
30	10.4407.00	Seal frame >VB60-80 zero **	1				1