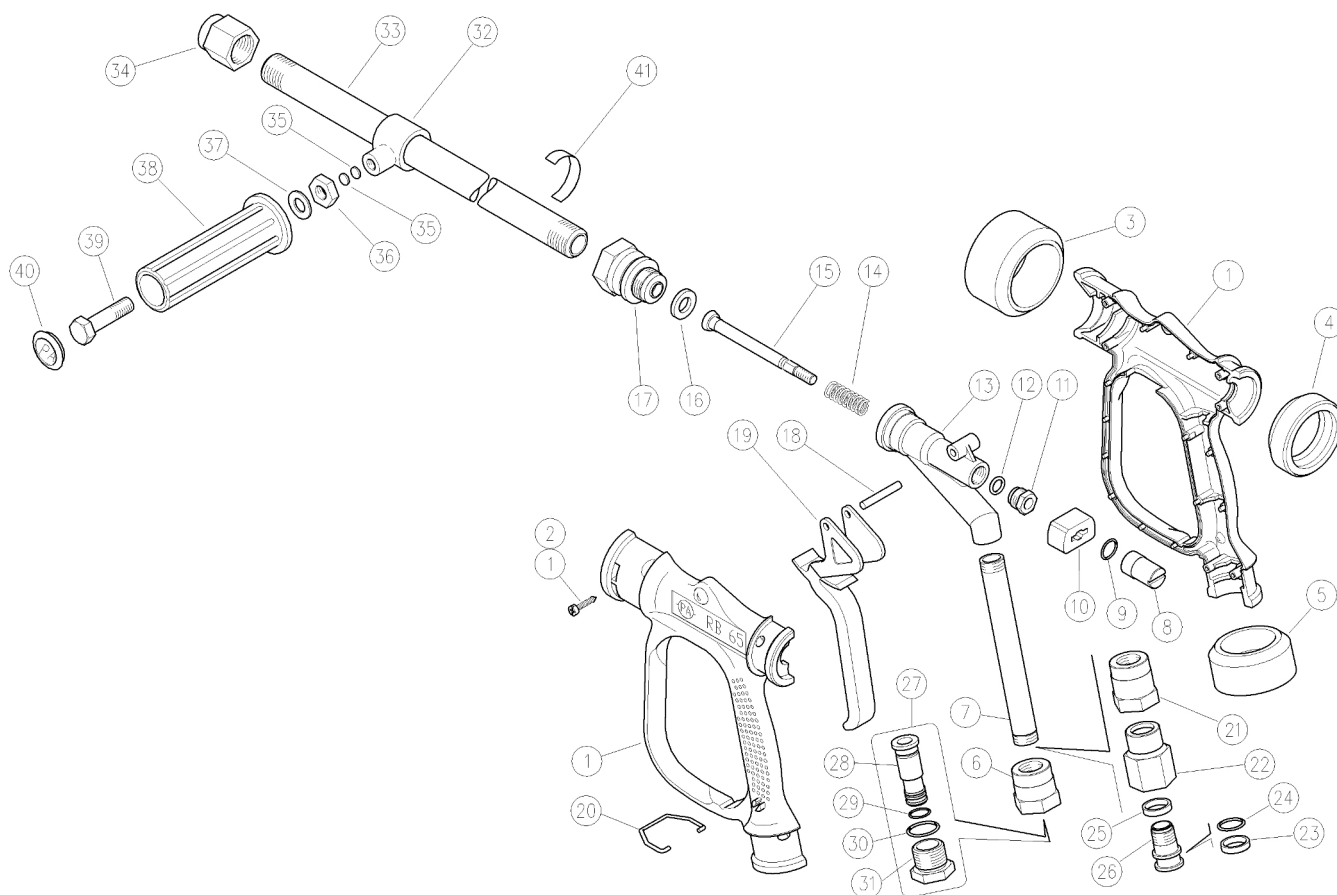


30.6450.00 RB65 sp.gun, on/off, brass 1/2FF -100l/min  
30.6453.00 RB65 sp.gun, on/off, brass+sw5 1/2FF 100

30.6456.40 Lan,sst.RB65 1/2MF Bsp 400mm grip+cpl  
30.6456.80 Lan,sst.RB65 1/2MF Bsp 800mm grip+cpl



K1K2K3K4					K1K2K3K4						
1	30.6446.24	Casing-kit -RB65-100L v.2+scr. Sst.	1		2	30.6427.31	Coupl. -SW, 1/2F Bsp (1)	1		5	
2	16.3075.51	S/tapping scr. 3,5x18 mm sst.	6		10	23	26.1075.85	Bushing, open 15,5x19x4 mm PTFE (1)	1		5
3	30.6412.85	Front guard ring, TPEs blue v.2	1		5	24	10.3092.10	O-ring, 2x15 mm Vi 70 (1)	1		10
4	30.6413.85	Back guard ring, TPEs blue v.2	1		5	25	26.1074.85	Bushing, 15,5x19x4 mm PTFE (1)	1		5
5	30.6414.85	Lower guard ring, TPEs blue v.2	1		5	26	26.1072.31	Pin, M15x1-19 mm brass (1)	1		10
6	30.6407.31	Coupl., M16x1,5F-1/2F Bsp brass	1		3	27	30.6430.00	Swivel, brass -RB65+13mm h.barb **	1		10
7	30.6409.36	Tube, M16x1,5 FF 130 mm brass	1		5	28	30.6431.31	13mm hose barb, brass	1		3
8	30.6418.31	Regulating pin, M7	1		5	29	10.3060.00	O-ring, 1,78x12,42 mm	1		10
9	10.3091.10	O-ring, 2x14 mm Vi 70	1	•	10	30	10.3092.90	O-ring, 2x19 mm	1		10
10	30.6443.84	Sliding block, PA red	1		5	31	30.6432.31	Coupl. -SW, 1/2M Bsp brass	1		3
11	30.6417.31	Plug, M14x1 M brass	1		5	32	30.5017.35	Tube fastener, 1/2" Bsp (2)	1		5
12	10.3170.10	O-ring, 2,62x7,6 mm Vi 70	1	•	10	33	30.6447.56	Tube, 1/2Bsp FF 796 mm Sst. (3)	1		1
13	30.6405.35	Housing -RB65, brass	1		3	33	30.6458.56	Tube, 1/2Bsp FF 398 mm Sst. (2)	1		1
14	30.6454.51	Spring, 2x12,9x40 mm Sst.	1	•	5	34	30.6457.31	Nozzle holder, 1/2Bsp FF (2)	1		3
15	30.6452.31	Piston -RB65 on/off, brass	1	•	5	35	13.5305.00	Plate, 8x1,5 mm Cu (2)	2		10
16	30.6408.85	Front seal, 11x20,5x3 mm FKM80	1	•	10	36	11.4627.50	Hex. nut, M10, Sst. (2,3)	1		10
17	30.6451.31	Front coupl. -RB65 on/off, 1/2F Bsp brs	1		1	37	14.3799.51	Sst 10x21 mm washer (2,3)	1		5
18	30.6428.31	Parallel pin, 5x38 mm brass	1		5	38	41.0054.84	Knob, 32x115 mm PP blue (2,3)	1		5
19	30.6444.84	Trigger -RB65, PA red	1		5	39	16.2032.35	Sst. screw, DIN933 M10x35 mm (2,3)	1		5
20	30.6415.51	Trigger retainer, Sst.	1		5	40	30.6478.84	Plug, Knob PP blue (2,3)	1		5
21	30.6426.31	Coupl. -SW, M15x1F-M16x1,5F (1)	1		3	41	15.3814.00	Label "2,4MPa Tubo inox - PA"	1		1

\*\*

K1	30.6422.24	Seals spares kit -RB65, 3x1pcs.	1
K2	30.6459.24	Repair kit -RB65 on/off, 5x1pcs.	1

(1) 30.6453.00 (2) 30.6456.40 (3) 30.6456.80